

## Product datasheet for **TP308750**

### Glutathione S Transferase alpha 1 (GSTA1) (NM\_145740) Human Recombinant Protein

#### Product data:

Product Type:	Recombinant Proteins
Description:	Recombinant protein of human glutathione S-transferase alpha 1 (GSTA1), 20 µg
Species:	Human
Expression Host:	HEK293T
Expression cDNA Clone or AA Sequence:	>RC208750 protein sequence <b>Red</b> =Cloning site <b>Green</b> =Tags(s)
	 MAEKPKLHYFNARGRMESTRWLLAAAGVEFEEKFIKSAEDLDKLRNDGYLMFQQVPMVEIDGMKLVQTRA ILNYIASKYNLYGKDIKERALIDMYIEGIADLGEMILLPVCPPEEKDAKLALIKEKIKNRYFPAFEKVL KSHGQDYLVGNKLSRADIHLVELLYVEELDSSLISSFLLKALKTRISNLPTVKKFLQPGSPRKPPMDE KSLEEARKIFRF  <b>TRTRPLEQKLISEEDLAANDILDYKDDDDKV</b>
Tag:	C-Myc/DDK
Predicted MW:	25.5 kDa
Concentration:	>0.05 µg/µL as determined by microplate BCA method
Purity:	> 80% as determined by SDS-PAGE and Coomassie blue staining
Buffer:	25 mM Tris-HCl, 100 mM glycine, pH 7.3, 10% glycerol
Preparation:	Recombinant protein was captured through anti-DDK affinity column followed by conventional chromatography steps.
Note:	For testing in cell culture applications, please filter before use. Note that you may experience some loss of protein during the filtration process.
Storage:	Store at -80°C.
Stability:	Stable for 12 months from the date of receipt of the product under proper storage and handling conditions. Avoid repeated freeze-thaw cycles.
RefSeq:	<a href="#">NP_665683</a>
Locus ID:	2938
UniProt ID:	<a href="#">P08263</a>



[View online »](#)

RefSeq Size: 1276

Cytogenetics: 6p12.2

RefSeq ORF: 666

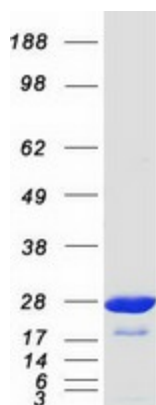
Synonyms: GST-epsilon; GST2; GSTA1-1; GTH1

**Summary:** This gene encodes a member of a family of enzymes that function to add glutathione to target electrophilic compounds, including carcinogens, therapeutic drugs, environmental toxins, and products of oxidative stress. This action is an important step in detoxification of these compounds. This subfamily of enzymes has a particular role in protecting cells from reactive oxygen species and the products of peroxidation. Polymorphisms in this gene influence the ability of individuals to metabolize different drugs. This gene is located in a cluster of similar genes and pseudogenes on chromosome 6. Alternative splicing results in multiple transcript variants. [provided by RefSeq, Jan 2016]

**Protein Families:** Druggable Genome

**Protein Pathways:** Drug metabolism - cytochrome P450, Glutathione metabolism, Metabolism of xenobiotics by cytochrome P450

### Product images:



Coomassie blue staining of purified GSTA1 protein (Cat# TP308750). The protein was produced from HEK293T cells transfected with GSTA1 cDNA clone (Cat# [RC208750]) using MegaTran 2.0 (Cat# [TT210002]).