



RefSeq: [NP\\_005911](#)

Locus ID: 4209

UniProt ID: [Q14814](#)

RefSeq Size: 5996

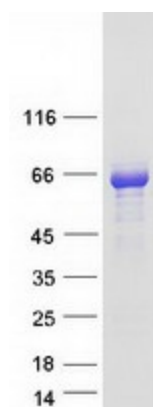
Cytogenetics: 1q22

RefSeq ORF: 1563

**Summary:** This gene is a member of the myocyte-specific enhancer factor 2 (MEF2) family of transcription factors. Members of this family are involved in control of muscle and neuronal cell differentiation and development, and are regulated by class II histone deacetylases. Fusions of the encoded protein with Deleted in Azoospermia-Associated Protein 1 (DAZAP1) due to a translocation have been found in an acute lymphoblastic leukemia cell line, suggesting a role in leukemogenesis. The encoded protein may also be involved in Parkinson disease and myotonic dystrophy. Alternative splicing results in multiple transcript variants. [provided by RefSeq, Oct 2012]

**Protein Families:** Transcription Factors

### Product images:



Coomassie blue staining of purified MEF2D protein (Cat# [TP308748]). The protein was produced from HEK293T cells transfected with MEF2D cDNA clone (Cat# [RC208748]) using MegaTran 2.0 (Cat# [TT210002]).