

Product datasheet for **TP308746M**

Ribonuclease T2 (RNASET2) (NM_003730) Human Recombinant Protein

Product data:

Product Type: Recombinant Proteins

Description: Recombinant protein of human ribonuclease T2 (RNASET2), 100 µg

Species: Human

Expression Host: HEK293T

Expression cDNA Clone >RC208746 protein sequence

or AA Sequence: **Red**=Cloning site **Green**=Tags(s)

MRPAALRGALLGCLCLALLCLGGADKRLRDNHEWKKLIMVQHPETVCEKIQNDCRDPDPDYWTIHGLWPD
KSEGCNRSWPFNLEEIKDLLPEMRAYWPDVIHSFPNRSRFWKHEWEKHGTCAAQVDALNSQKKYFGRSLE
LYRELDLNSVLLKLGKPSINYYQVADFKDALARVYGVIPKIQCLPPSQDEEVQTIGQIELCLTKQDQQL
QNCTEPGEQPSPKQEVWLANGAAESRGLRVCEDGPVFYPPPKTKH

TRTRPLEQKLISEEDLAANDILDYKDDDDKV

Tag: C-Myc/DDK

Predicted MW: 29.3 kDa

Concentration: >0.05 µg/µL as determined by microplate BCA method

Purity: > 80% as determined by SDS-PAGE and Coomassie blue staining

Buffer: 25 mM Tris-HCl, 100 mM glycine, pH 7.3, 10% glycerol

Preparation: Recombinant protein was captured through anti-DDK affinity column followed by conventional chromatography steps.

Note: For testing in cell culture applications, please filter before use. Note that you may experience some loss of protein during the filtration process.

Storage: Store at -80°C.

Stability: Stable for 12 months from the date of receipt of the product under proper storage and handling conditions. Avoid repeated freeze-thaw cycles.

RefSeq: [NP_003721](#)

Locus ID: 8635

UniProt ID: [O00584](#)



[View online >](#)

RefSeq Size: 1250

Cytogenetics: 6q27

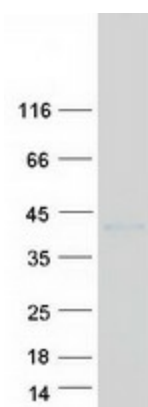
RefSeq ORF: 768

Synonyms: bA514O12.3; RNASE6PL

Summary: This ribonuclease gene is a novel member of the Rh/T2/S-glycoprotein class of extracellular ribonucleases. It is a single copy gene that maps to 6q27, a region associated with human malignancies and chromosomal rearrangement. [provided by RefSeq, Jul 2008]

Protein Families: Secreted Protein

Product images:



Coomassie blue staining of purified RNASET2 protein (Cat# [TP308746]). The protein was produced from HEK293T cells transfected with RNASET2 cDNA clone (Cat# [RC208746]) using MegaTran 2.0 (Cat# [TT210002]).