

Product datasheet for **TP308729M**

ARHGEF11 (NM_198236) Human Recombinant Protein

Product data:

Product Type:	Recombinant Proteins
Description:	Recombinant protein of human Rho guanine nucleotide exchange factor (GEF) 11 (ARHGEF11), transcript variant 2, 100 µg
Species:	Human
Expression Host:	HEK293T



[View online »](#)

Expression cDNA Clone >RC208729 representing NM_198236
 or AA Sequence: **Red**=Cloning site **Green**=Tags(s)

MSVRLPQSIDRLSSLSLGDSPERKSPSHRQPSDASETTGLVQRCVVIQKDQHGFGFTVSGDRIVLVQ
 SVRPGGAAMKAGVKEGDRIIKVNGTMTVNSSHLEVVKLIKSGAYVALTLLGSSPSSMGISGLQQDPSPAG
 APRITSVIPSPPPPPLPPPQRITGPKPLQDPEVQKHATQILRNMLRQEEKELQRICEVYSRNPASLLEE
 QIEGARRRVTQLQLKIQQETGGSDILPLYGDTSRPSEGRLSDSQEGDSDGTERFSPSLES LMNR
 NSVLSDPGLDSPRTSPVIMARVAQHRRRQGSAAVPSTGDQGVQDQSPKPLIIGPEEDYDPGYFNNESDII
 FQDLEKLKSRPAHLGVFLRYIFSQADPSPLLFYLCAEVYQQASP KDSRSLGKDIWNIFLEKNAPLRVKIP
 EMLQAEIDSRLRNSEDARGVLC EAQEAAMPEIQEQIH DYRTKRTLGLGSLYGENDLLDLDGDPLRERQVA
 EKQLAALGDILSKYEEDRSAPMDFALNTYMSHAGIRLREARPSNTAEKAQSAPDKDKWLPFFPKTKKSSN
 SKKEKDALEDKRNPIPKYIGPKSSSQSTFHIPLSPVEVKPGNVRNIIQHFENNQQYDAPEPGTQRLST
 GSFPELDLESSEIRLGRSESLKREEMKRSRKAENVPRSRSDVDM DAAA EATRLHQSASSTSSLS
 TRSLENPTPPFTPKMGRRSIESPSLGFCTDTLLPHLEDDLGLSDLEPEPDAQNWQHTV GKDVVAGLTQ
 REIDRQEVINELFVTEASHLRTLRLVLDLIFYQRMKKNLMPREELARLFPNLPELIEIHNSWCEAMKLR
 EEGPIIKEISDLMLARFDGPAREELQQVAAQFCYSQIALELIKTKQRKESRFQ LFMQEAESH PQRRRLQ
 LRDLIISEMQRLTKYPLLESIIKHTEGGTSEHEKLCRARDQCREILKYVNEAVKQTENRHRLEGYQKRL
 DATA LERASNPLAAEFKSLDLTTRKMIHEGPLTWRISKDKTLDLHVLLLEDLLVLLQKQDEKLLKCHSK
 TAVGSSDSKQTFSPVLKLN AVLIRSVATDKRAFFICTSKLGPPIYELVALTSSDKNTWMELLEAVRN
 ATRHPGAAMPVHPPPPGPREPAQQGTPSRVELDSDVHFGEPEPEELPGGTGSQQRVQGHQVLEDP
 EQEGSAEEEEELGVLPCPSTSLDGENRGIRTRNPIHLAFPGPLFMEGLADSALEDVENLRHLILWSLLPGH
 TMETQAAQEPEDDLTPTPSVISVTSHPWDGSPGQAPPGGEGDNTQLAGLEGERPEQEDMGLCSLEHLPP
 RTRNSGIWESPELDRNLAEDASSTEAAAGGYKVVRAEVAGSKVVPALPESGQSEPGPPEVEGGTKATGNC
 FYVSMPSGPPDSSTDHSEAPMSPPQPD SLPAGQTEPQPQLQGGND D PRRPSRSPSLALRDVGMIFHTIE
 QLT LKLNRLKDMELAHRELLKSLGGESSGGTTPVGSFHTEAARWTDGSLSPPAKEPLASDSRNSHELGPC
 PEDGSDAPLEDSTADAAAASPGP

TRTRPLEQKLISEEDLAANDILDYKDDDDKV

- Tag:** C-Myc/DDK
- Predicted MW:** 172.1 kDa
- Concentration:** >0.05 µg/µL as determined by microplate BCA method
- Purity:** > 80% as determined by SDS-PAGE and Coomassie blue staining
- Buffer:** 25 mM Tris-HCl, 100 mM glycine, pH 7.3, 10% glycerol
- Preparation:** Recombinant protein was captured through anti-DDK affinity column followed by conventional chromatography steps.
- Note:** For testing in cell culture applications, please filter before use. Note that you may experience some loss of protein during the filtration process.
- Storage:** Store at -80°C.
- Stability:** Stable for 12 months from the date of receipt of the product under proper storage and handling conditions. Avoid repeated freeze-thaw cycles.

RefSeq: [NP_937879](#)

Locus ID: 9826

UniProt ID: [Q15085](#)

RefSeq Size: 6904

Cytogenetics: 1q23.1

RefSeq ORF: 4686

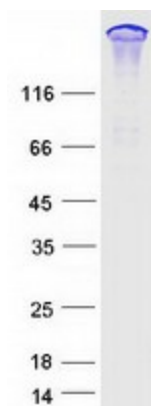
Synonyms: GTRAP48; PDZ-RHOGEF

Summary: Rho GTPases play a fundamental role in numerous cellular processes that are initiated by extracellular stimuli that work through G protein coupled receptors. The encoded protein may form a complex with G proteins and stimulate Rho-dependent signals. A similar protein in rat interacts with glutamate transporter EAAT4 and modulates its glutamate transport activity. Expression of the rat protein induces the reorganization of the actin cytoskeleton and its overexpression induces the formation of membrane ruffling and filopodia. Two alternative transcripts encoding different isoforms have been described. [provided by RefSeq, Jul 2008]

Protein Families: Druggable Genome

Protein Pathways: Vascular smooth muscle contraction

Product images:



Coomassie blue staining of purified ARHGEF11 protein (Cat# [TP308729]). The protein was produced from HEK293T cells transfected with ARHGEF11 cDNA clone (Cat# [RC208729]) using MegaTran 2.0 (Cat# [TT210002]).