

Product datasheet for **TP308729L**

ARHGEF11 (NM_198236) Human Recombinant Protein

Product data:

Product Type: Recombinant Proteins

Description: Recombinant protein of human Rho guanine nucleotide exchange factor (GEF) 11 (ARHGEF11), transcript variant 2, 1 mg

Species: Human

Expression Host: HEK293T



[View online »](#)

Expression cDNA Clone >RC208729 representing NM_198236
or AA Sequence: Red=Cloning site Green=Tags(s)

MSVRLPQSIDRLSSLSLGDSPERKSPSHRQPSDASETTGLVQRCVVIQKDQHGFGFTVSGDRIVLVQ
SVRPGGAAMKAGVKEGDRIIKVNGTMTVNSSHLEVVKLIKSGAYVALTLGSSPSSMGISGLQQDPSPAG
APRITSVIPSPPPPPLPPQKITGPKPLQDPEVQKHATQILRNMLRQEEKELQRICEVYSRNPASLLEE
QIEGARRRVTQLQLKIQQETGGSDILPLYGDTSRPSEGRLSDSQEGDSDGTERFPSLSELMNR
NSVLSDPGLDSPRTSPVIMARVAQHRRRQGSAAVSTGDQGVQSPKPLIIGPEEDYDPGYFNNESDII
FQDLEKLSRPAHLGVFLRYIFSQADPSPLLFLYCAEVYQQASPKDSRSLGKDIWNIFLEKNAPLRVKIP
EMLQAEIDSRLRNSEDARGVLCQAQEAAMPEIQEQIHDIRTKRTLGLGSLYGENDLLDLDGDPLRERQVA
EKQLAALGDILSKYEEDRSAPMDFALNTYMSHAGIRLREARPSNTAEKAQSAPDKDKWLPFFPKTKKSSN
SKKEKDALEDKRNPIPKYIGPKSSSQSTFHILSPVEVKPGNVRNIIQHFENNQQYDAPEPGTQRLST
GSFPEDLLESSEIRLGRSESLKREEMKRSRKAENVPRSRSDVMDAAAEATRLHQSASSTSSLS
TRLENPTPPFTPKMGRRSIESPSLGFCTDTLLPHLEDDLGLSDLEPEPDAQNWQHTVGDVWAGLTQ
REIDRQEVINELFVTEASHLRTLRLVLDLIFYQRMKKNLMPREELARLFPNLPELIEIHNSWCEAMKLR
EEGPIIKEISDLMLARFDGPAREELQQVAAQFCYSQIALELIKTKQRKESRFQLFMGEAESHPPQRRRLQ
LRDLIISEMQRLTKYPLLESIIKHTEGGTSEHEKLCRARDQCREILKYVNEAVKQNTENRHRLEGYQKRL
DATALEASNPLAAEFKSLDLTRKMIHEGPLTWRIKDKTLDLHVLLLEDLLVLLQKQDEKLLKCHSK
TAVGSSDSKQTFSPVLKLNALIRSVATDKRAFFICTSKLGPPIYELVALTSSDKNTWMELLEAVRN
ATRHPGAAMPVHPPPPGPREPAQQGTPSRVELDSDVHGEPEPEELPGGTGSQQRVQGHQVLEDP
EQEGSAEEEEELGVLPCPSTSLDGENRGIRTRNPIHLAFPGPLFMEGLADSALEDVENLRHLILWSLLPGH
TMETQAAQEPEDDLTPPSVISVTSHPWDGSPGQAPPGGEGDNTQLAGLEGERPEQEDMGLCSLEHLPP
RTRNSGIWESPELDRNLAEDASSTEAAAGGYKVVRAEVAGSKVVPALPESGQSEPGPPEVEGGTKATGNC
FYVSMPSGPPDSSTDHSEAPMSPPQPSLPAQTEPQPQLQGGNDPPRRPSRSPSLALRDVGMIFHTIE
QLTLKLNRLKDMELAHRELLKSLGGESSGGTTPVGSFHTEAARWTDGSLSPPAKEPLASDSRNSHELGPC
PEDGSDAPLEDSTADAAAASPGP

TRTRPLEQKLISEEDLAANDILDYKDDDDKV

Tag: C-Myc/DDK

Predicted MW: 172.1 kDa

Concentration: >0.05 µg/µL as determined by microplate BCA method

Purity: > 80% as determined by SDS-PAGE and Coomassie blue staining

Buffer: 25 mM Tris-HCl, 100 mM glycine, pH 7.3, 10% glycerol

Preparation: Recombinant protein was captured through anti-DDK affinity column followed by conventional chromatography steps.

Note: For testing in cell culture applications, please filter before use. Note that you may experience some loss of protein during the filtration process.

Storage: Store at -80°C.

Stability: Stable for 12 months from the date of receipt of the product under proper storage and handling conditions. Avoid repeated freeze-thaw cycles.

RefSeq: [NP_937879](#)

Locus ID: 9826

UniProt ID: [Q15085](#)

RefSeq Size: 6904

Cytogenetics: 1q23.1

RefSeq ORF: 4686

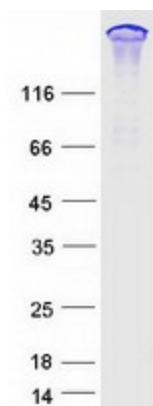
Synonyms: GTRAP48; PDZ-RHOGEF

Summary: Rho GTPases play a fundamental role in numerous cellular processes that are initiated by extracellular stimuli that work through G protein coupled receptors. The encoded protein may form a complex with G proteins and stimulate Rho-dependent signals. A similar protein in rat interacts with glutamate transporter EAAT4 and modulates its glutamate transport activity. Expression of the rat protein induces the reorganization of the actin cytoskeleton and its overexpression induces the formation of membrane ruffling and filopodia. Two alternative transcripts encoding different isoforms have been described. [provided by RefSeq, Jul 2008]

Protein Families: Druggable Genome

Protein Pathways: Vascular smooth muscle contraction

Product images:



Coomassie blue staining of purified ARHGEF11 protein (Cat# [TP308729]). The protein was produced from HEK293T cells transfected with ARHGEF11 cDNA clone (Cat# [RC208729]) using MegaTran 2.0 (Cat# [TT210002]).