

## Product datasheet for **TP308711L**

### **RAC1 (NM\_006908) Human Recombinant Protein**

#### **Product data:**

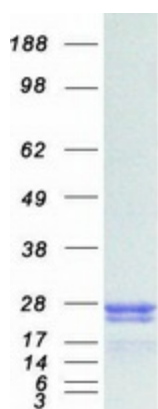
Product Type:	Recombinant Proteins
Description:	Recombinant protein of human ras-related C3 botulinum toxin substrate 1 (rho family, small GTP binding protein Rac1) (RAC1), transcript variant Rac1, 1 mg
Species:	Human
Expression Host:	HEK293T
Expression cDNA Clone or AA Sequence:	>RC208711 protein sequence <b>Red</b> =Cloning site <b>Green</b> =Tags(s)
	 MQAIKCVVGDGAVGKTCLLISYTTNAFPGEYIPTVFDNYSANVMVDGKPVNLGLWDTAGQEDYDRLRPL SYPQTDVFLICFSLVSPASFENVRRAKWYPEVRHHCPNTPHILVGTKLDLRDDKDTIEKLKEKLTPTYP QGLAMAKEIGAVKYLECSALTQRGLKTVFDEAIRAVLCPPPVKRKRKCLLL  <b>TRTRPLEQKLISEEDLAANDILDYKDDDDKV</b>
Tag:	C-Myc/DDK
Predicted MW:	21.3 kDa
Concentration:	>0.05 µg/µL as determined by microplate BCA method
Purity:	> 80% as determined by SDS-PAGE and Coomassie blue staining
Buffer:	25 mM Tris-HCl, 100 mM glycine, pH 7.3, 10% glycerol
Preparation:	Recombinant protein was captured through anti-DDK affinity column followed by conventional chromatography steps.
Note:	For testing in cell culture applications, please filter before use. Note that you may experience some loss of protein during the filtration process.
Storage:	Store at -80°C.
Stability:	Stable for 12 months from the date of receipt of the product under proper storage and handling conditions. Avoid repeated freeze-thaw cycles.
RefSeq:	<a href="#">NP_008839</a>
Locus ID:	5879
UniProt ID:	<a href="#">P63000</a> , <a href="#">A4D2P1</a>



[View online »](#)

RefSeq Size:	2341
Cytogenetics:	7p22.1
RefSeq ORF:	576
Synonyms:	MIG5; MRD48; p21-Rac1; Rac-1; TC-25
Summary:	The protein encoded by this gene is a GTPase which belongs to the RAS superfamily of small GTP-binding proteins. Members of this superfamily appear to regulate a diverse array of cellular events, including the control of cell growth, cytoskeletal reorganization, and the activation of protein kinases. Two transcript variants encoding different isoforms have been found for this gene. [provided by RefSeq, Mar 2009]
Protein Families:	Druggable Genome
Protein Pathways:	Adherens junction, Amyotrophic lateral sclerosis (ALS), Axon guidance, B cell receptor signaling pathway, Chemokine signaling pathway, Colorectal cancer, Epithelial cell signaling in Helicobacter pylori infection, Fc epsilon RI signaling pathway, Fc gamma R-mediated phagocytosis, Focal adhesion, Leukocyte transendothelial migration, MAPK signaling pathway, Natural killer cell mediated cytotoxicity, Neurotrophin signaling pathway, Pancreatic cancer, Pathways in cancer, Regulation of actin cytoskeleton, Renal cell carcinoma, Toll-like receptor signaling pathway, VEGF signaling pathway, Viral myocarditis, Wnt signaling pathway

### Product images:



Coomassie blue staining of purified RAC1 protein (Cat# [TP308711]). The protein was produced from HEK293T cells transfected with RAC1 cDNA clone (Cat# [RC208711]) using MegaTran 2.0 (Cat# [TT210002]).