

## Product datasheet for **TP308702M**

### MYG1 (NM\_021640) Human Recombinant Protein

#### Product data:

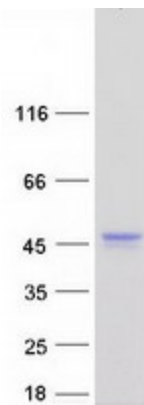
|                                       |   |
|---------------------------------------|---|
| Product Type:                         | Recombinant Proteins  |
| Description:                          | Recombinant protein of human chromosome 12 open reading frame 10 (C12orf10), 100 µg   |
| Species:                              | Human   |
| Expression Host:                      | HEK293T   |
| Expression cDNA Clone or AA Sequence: | >RC208702 protein sequence<br><b>Red</b> =Cloning site <b>Green</b> =Tags(s)  |
|                                       | <p>MGHRFLRGLLTLPPPLYTRHRMLGPESVPPPKRSRSLMAPPRIPTHNGTFHCDEALACALLRLLPE<br/>YRDAEIVRTRDPEKLASCDIVVDVGGGEYDPRRHRYDHHQRSFTETMSSLSPGKPWQTKLSSAGLIYLFHG<br/>HKLLAQLLGTSEEDSMVGTLYDKMYENFVEEVDVDNGISQWAEAGEPRYALTTTLSARVARLNPTWNHPD<br/>QDTEAGFKRAMDLVQEEFLQRLDFYQHSWLPARALVEEALAQRFQVDPSPGEIVELAKGACPWKEHLYHLE<br/>SGLSPPVAIFFVIYTDQAGQWRIQCVPKEPHSFQSRLPLPEPWRGLRDEALDQVSGIPGCIFVHASGFIG<br/>GHRTRREGALSMARATLAQRSYLPQIS</p> <p><b>TRTRPLEQKLISEEDLAANDILDYKDDDDKV</b></p> |
| Tag:                                  | C-Myc/DDK   |
| Predicted MW:                         | 42.3 kDa  |
| Concentration:                        | >0.05 µg/µL as determined by microplate BCA method  |
| Purity:                               | > 80% as determined by SDS-PAGE and Coomassie blue staining   |
| Buffer:                               | 25 mM Tris-HCl, 100 mM glycine, pH 7.3, 10% glycerol  |
| Preparation:                          | Recombinant protein was captured through anti-DDK affinity column followed by conventional chromatography steps.  |
| Note:                                 | For testing in cell culture applications, please filter before use. Note that you may experience some loss of protein during the filtration process.  |
| Storage:                              | Store at -80°C.   |
| Stability:                            | Stable for 12 months from the date of receipt of the product under proper storage and handling conditions. Avoid repeated freeze-thaw cycles.   |
| RefSeq:                               | <a href="#">NP_067653</a>   |
| Locus ID:                             | 60314   |



[View online »](#)

|               |   |
|---------------|---|
| UniProt ID:   | <a href="#">Q86UA3</a>  |
| RefSeq Size:  | 1215  |
| Cytogenetics: | 12q13.13  |
| RefSeq ORF:   | 1128  |
| Synonyms:     | C12orf10; Gamm1; MST024; MSTP024; MYG   |
| Summary:      | 3'-5' RNA exonuclease which cleaves in situ on specific transcripts in both nucleus and mitochondrion. Involved in regulating spatially segregated organellar RNA processing, acts as a coordinator of nucleo-mitochondrial crosstalk (PubMed:31081026). In nucleolus, processes pre-ribosomal RNA involved in ribosome assembly and alters cytoplasmic translation. In mitochondrial matrix, processes 3'-termini of the mito-ribosomal and messenger RNAs and controls translation of mitochondrial proteins (Probable).[UniProtKB/Swiss-Prot Function] |

### Product images:



Coomassie blue staining of purified C12orf10 protein (Cat# [TP308702]). The protein was produced from HEK293T cells transfected with C12orf10 cDNA clone (Cat# [RC208702]) using MegaTran 2.0 (Cat# [TT210002]).