

## Product datasheet for **TP308702L**

### MYG1 (NM\_021640) Human Recombinant Protein

#### Product data:

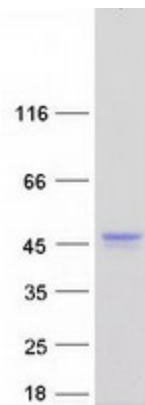
Product Type:	Recombinant Proteins
Description:	Recombinant protein of human chromosome 12 open reading frame 10 (C12orf10), 1 mg
Species:	Human
Expression Host:	HEK293T
Expression cDNA Clone or AA Sequence:	>RC208702 protein sequence <b>Red</b> =Cloning site <b>Green</b> =Tags(s)
	<p>MGHRFLRGLLTLPPPLYTRHRMLGPESVPPPKRSRSLMAPPRIPTHNGTFHCDEALACALLRLLPE YRDAEIVRTRDPEKLASCDIVVDVGGGEYDPRRHRYDHHQRSFTETMSSLSPGKPWQTKLSSAGLIYLFHG HKLLAQLLGTSEEDSMVGTLYDKMYENFVEEVDVDNGISQWAEAGEPRYALTTLSARVARLNPTWNHPD QDTEAGFKRAMDLVQEEFLQRLDFYQHSWLPARALVEEALAQRFQVDPSPGEIVELAKGACPWKEHLYHLE SGLSPPVAIFFVIYTDQAGQWRIQCVPKEPHSFQSRLPLPEPWRGLRDEALDQVSGIPGCIFVHASGFIG GHRREGALSMARATLAQRSYLPQIS</p> <p><b>TRTRPLEQKLISEEDLAANDILDYKDDDDKV</b></p>
Tag:	C-Myc/DDK
Predicted MW:	42.3 kDa
Concentration:	>0.05 µg/µL as determined by microplate BCA method
Purity:	> 80% as determined by SDS-PAGE and Coomassie blue staining
Buffer:	25 mM Tris-HCl, 100 mM glycine, pH 7.3, 10% glycerol
Preparation:	Recombinant protein was captured through anti-DDK affinity column followed by conventional chromatography steps.
Note:	For testing in cell culture applications, please filter before use. Note that you may experience some loss of protein during the filtration process.
Storage:	Store at -80°C.
Stability:	Stable for 12 months from the date of receipt of the product under proper storage and handling conditions. Avoid repeated freeze-thaw cycles.
RefSeq:	<a href="#">NP_067653</a>
Locus ID:	60314



[View online »](#)

UniProt ID:	<a href="#">Q86UA3</a>
RefSeq Size:	1215
Cytogenetics:	12q13.13
RefSeq ORF:	1128
Synonyms:	C12orf10; Gamm1; MST024; MSTP024; MYG
Summary:	3'-5' RNA exonuclease which cleaves in situ on specific transcripts in both nucleus and mitochondrion. Involved in regulating spatially segregated organellar RNA processing, acts as a coordinator of nucleo-mitochondrial crosstalk (PubMed:31081026). In nucleolus, processes pre-ribosomal RNA involved in ribosome assembly and alters cytoplasmic translation. In mitochondrial matrix, processes 3'-termini of the mito-ribosomal and messenger RNAs and controls translation of mitochondrial proteins (Probable).[UniProtKB/Swiss-Prot Function]

### Product images:



Coomassie blue staining of purified C12orf10 protein (Cat# [TP308702]). The protein was produced from HEK293T cells transfected with C12orf10 cDNA clone (Cat# [RC208702]) using MegaTran 2.0 (Cat# [TT210002]).