

## Product datasheet for **TP308695L**

### CRELD2 (NM\_024324) Human Recombinant Protein

#### Product data:

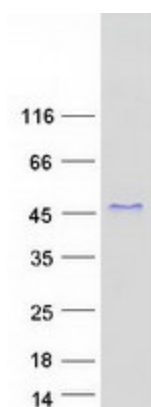
Product Type:	Recombinant Proteins
Description:	Recombinant protein of human cysteine-rich with EGF-like domains 2 (CRELD2), transcript variant 2, 1 mg
Species:	Human
Expression Host:	HEK293T
Expression cDNA Clone or AA Sequence:	>RC208695 protein sequence <b>Red</b> =Cloning site <b>Green</b> =Tags(s)
	<p>MRLPRAALGLLPLLLLLPPAPEAAKKTPCHRCRGLVDKFNQGMVDTAKKNFGGGNTAWEKTLISKYSESIRLLEILEGLCESSDFECNQMLEAQEEHLEAWWLQLKSEYDPLFEWFVCVTKLVCCSPGYGPDCLACQGGSQRPCSGNGHCSGDGSRQGDGSCRCHMGYQGGLCTDCMDGYFSSLRNETHSICTACDESKTCSGLTNRDCGECEVGWVLDGACVDVDECAAEPPPCSAAQFCKNANGSYTCEECDSSCVGCTGEGPGNCKEKCISGYAREHGQCADVDECALAEKTCVRKNENCYNTPGSYVCVCPDGFEGTEDACVPPAEAEATEGESPTQLPSREDL</p> <p><b>TRTRPLEQKLISEEDLAANDILDYKDDDDKV</b></p>
Tag:	C-Myc/DDK
Predicted MW:	38 kDa
Concentration:	>0.05 µg/µL as determined by microplate BCA method
Purity:	> 80% as determined by SDS-PAGE and Coomassie blue staining
Buffer:	25 mM Tris-HCl, 100 mM glycine, pH 7.3, 10% glycerol
Preparation:	Recombinant protein was captured through anti-DDK affinity column followed by conventional chromatography steps.
Note:	For testing in cell culture applications, please filter before use. Note that you may experience some loss of protein during the filtration process.
Storage:	Store at -80°C.
Stability:	Stable for 12 months from the date of receipt of the product under proper storage and handling conditions. Avoid repeated freeze-thaw cycles.
RefSeq:	<u><a href="#">NP_077300</a></u>



[View online »](#)

Locus ID:	79174
UniProt ID:	<a href="#">Q6UXH1</a>
RefSeq Size:	1449
Cytogenetics:	22q13.33
RefSeq ORF:	1059
Summary:	May regulate transport of alpha4-beta2 neuronal acetylcholine receptor.[UniProtKB/Swiss-Prot Function]
Protein Families:	Druggable Genome, Secreted Protein

### Product images:



Coomassie blue staining of purified CRELD2 protein (Cat# [TP308695]). The protein was produced from HEK293T cells transfected with CRELD2 cDNA clone (Cat# [RC208695]) using MegaTran 2.0 (Cat# [TT210002]).