

## Product datasheet for **TP308694**

### WDR58 (THOC6) (NM\_024339) Human Recombinant Protein

#### Product data:

Product Type:	Recombinant Proteins
Description:	Recombinant protein of human THO complex 6 homolog (Drosophila) (THOC6), transcript variant 1, 20 µg
Species:	Human
Expression Host:	HEK293T
Expression cDNA Clone or AA Sequence:	>RC208694 protein sequence <b>Red</b> =Cloning site <b>Green</b> =Tags(s)

MERAVPLAVPLGQTEVFQALQRLHMTIFSQSVSPCGKFLAAGNNYGQIAIFSLSSALSSEAKEESKPPV  
TFQAHDGPVYSMVSTDRHLLSAGDGEVKAWLWAEMLKKGCKELWRRQPPYRTSLEVPEINALLVPKENS  
LILAGGDCQLHTMDLETGTFTRVLRGHTDYIHCLALRERSPEVLSGGEDGAVRLWDLRTAKEVQTIEVYK  
HEECSRPHNGRWIGCLATDSDWMVCGGGPALTWHLRSSTPTTIFPIRAPQKHVTFYQDLILSAGQGRCV  
NQWQLSGELKAQVPGSSPGLLSLSLNQQPAAPECKVLTAAAGNSCRVDVFTNLGYRAFSLSF

**TRTRPLEQKLISEEDLAANDILDYKDDDDKV**

Tag:	C-Myc/DDK
Predicted MW:	37.4 kDa
Concentration:	>0.05 µg/µL as determined by microplate BCA method
Purity:	> 80% as determined by SDS-PAGE and Coomassie blue staining
Buffer:	25 mM Tris-HCl, 100 mM glycine, pH 7.3, 10% glycerol
Preparation:	Recombinant protein was captured through anti-DDK affinity column followed by conventional chromatography steps.
Note:	For testing in cell culture applications, please filter before use. Note that you may experience some loss of protein during the filtration process.
Storage:	Store at -80°C.
Stability:	Stable for 12 months from the date of receipt of the product under proper storage and handling conditions. Avoid repeated freeze-thaw cycles.
RefSeq:	<a href="#">NP_077315</a>
Locus ID:	79228



[View online »](#)

UniProt ID: [Q86W42](#)

RefSeq Size: 1444

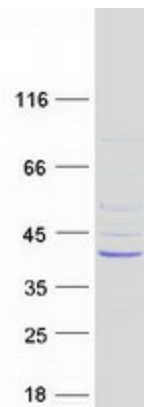
Cytogenetics: 16p13.3

RefSeq ORF: 1023

Synonyms: fSAP35; WDR58

**Summary:** This gene encodes a subunit of the multi-protein THO complex, which is involved in coordination between transcription and mRNA processing. The THO complex is a component of the TREX (transcription/export) complex, which is involved in transcription and export of mRNAs. A missense mutation in this gene is associated with a neurodevelopmental disorder called Beaulieu-Boycott-Innes syndrome. [provided by RefSeq, Dec 2016]

### Product images:



Coomassie blue staining of purified THOC6 protein (Cat# TP308694). The protein was produced from HEK293T cells transfected with THOC6 cDNA clone (Cat# [RC208694]) using MegaTran 2.0 (Cat# [TT210002]).