

Product datasheet for **TP308687M**

ITM2C (NM_001012514) Human Recombinant Protein

Product data:

Product Type:	Recombinant Proteins
Description:	Recombinant protein of human integral membrane protein 2C (ITM2C), transcript variant 3, 100 µg
Species:	Human
Expression Host:	HEK293T
Expression cDNA Clone or AA Sequence:	>RC208687 protein sequence Red =Cloning site Green =Tags(s)

MVKISFQPAVAGIKGDKADKASAPAPASATEILLTPARLARDNFFRCGVLYEDSLSSQVRTQMELEED
VKIYLDENYERINVPVPQFGGGDPADIIHDFQRGLTAYHDISLDKCYVIELNTTIVLPPRNFWELLMNVK
RGTYLPQTYIIQEEMVVTEHVSDKEALGSFIYHLCNGKDTYRLRRRATRRRINKRGAKNCNAIRHFENTF
VWETLICGV

TRTRPLE**Q**KLISEEDLAANDILDYKDDDDKV

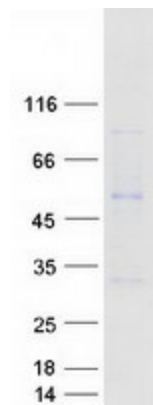
Tag:	C-Myc/DDK
Predicted MW:	24.8 kDa
Concentration:	>0.05 µg/µL as determined by microplate BCA method
Purity:	> 80% as determined by SDS-PAGE and Coomassie blue staining
Buffer:	25 mM Tris-HCl, 100 mM glycine, pH 7.3, 10% glycerol
Preparation:	Recombinant protein was captured through anti-DDK affinity column followed by conventional chromatography steps.
Note:	For testing in cell culture applications, please filter before use. Note that you may experience some loss of protein during the filtration process.
Storage:	Store at -80°C.
Stability:	Stable for 12 months from the date of receipt of the product under proper storage and handling conditions. Avoid repeated freeze-thaw cycles.
RefSeq:	<u>NP_001012532</u>
Locus ID:	81618



[View online »](#)

UniProt ID:	<u>Q9NQX7</u>
RefSeq Size:	1974
Cytogenetics:	2q37.1
RefSeq ORF:	660
Synonyms:	BRI3; BRICD2C; E25; E25C; ITM3
Summary:	Negative regulator of amyloid-beta peptide production. May inhibit the processing of APP by blocking its access to alpha- and beta-secretase. Binding to the beta-secretase-cleaved APP C-terminal fragment is negligible, suggesting that ITM2C is a poor gamma-secretase cleavage inhibitor. May play a role in TNF-induced cell death and neuronal differentiation (By similarity). [UniProtKB/Swiss-Prot Function]
Protein Families:	Transmembrane

Product images:



Coomassie blue staining of purified ITM2C protein (Cat# [TP308687]). The protein was produced from HEK293T cells transfected with ITM2C cDNA clone (Cat# [RC208687]) using MegaTran 2.0 (Cat# [TT210002]).