

## Product datasheet for **TP308654M**

### CD31 (PECAM1) (NM\_000442) Human Recombinant Protein

#### Product data:

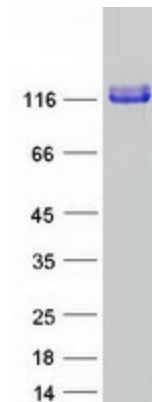
Product Type:	Recombinant Proteins
Description:	Recombinant protein of human platelet/endothelial cell adhesion molecule (PECAM1), 100 µg
Species:	Human
Expression Host:	HEK293T
Expression cDNA Clone or AA Sequence:	>RC208654 representing NM_000442 <b>Red</b> =Cloning site <b>Green</b> =Tags(s)
	<p>MQPRWAQGATMWLGVLLTLLCSSLEGQENSFTINSVDMKSLPDWTVQNGKNLTLQCFADVSTTSHVKPQ HQMLFYKDDVLFYNISSMKSTESYFIPEVRIYDSGTYKCTVIVNNKEKTTAEYQVLVEGVSPRVTLDDKK EAIQGGIVRVNCSVPEEKAPIHFTIEKLELNEKMKVCLKREKNSRDQNFVILEFPVEEQDRVLSFRCQARI ISGIHMQTSESTKSELVTVTESFSTPKFHISPTGMIMEGAQLHIKCTIQVTHLAQEFPEIIIQDKAIVA HNRHGNKAVYSVMAMVEHSGNYTCKVESSRISKVSSIVVNITELFSKPELESSFTHLDQGERLNLSCSIP GAPPANFTIQKEDTIVSQTQDFTKIASKSDSGTYICTAGIDKVVKKSNTVQIWCCEMLSQPRISYDAQFE VIKGQTIIEVRCESISGTLPISYQLLTKSVLENSTKNSNDPAVFKDNPTEDVEYQCVADNCHSHAKMLSE VLRVKVIAPVDEVQISILSSKVVESGEDIVLQCAVNEGSGPITYKFYREKEGKPFYQMTSNATQAFWTKQ KANKEQEGEYYCTAFNRANHASSVPRSKILTVRVILAPWKKGLIAVWIIGVIIALLIIAAKCYFLRKAKA KQMPVEMSRPAVPLLNSNNEKMSDPNMEANSHYGHNDVGNHAMKPINDNKEPLNSDVQYTEVQVSSAES HKDLGKKDTETVYSEVRKAVPDAVESRYSRTEGSLDGT</p> <p><b>TRTRPLEQKLISEEDLAANDILDYKDDDDKV</b></p>
Tag:	C-Myc/DDK
Predicted MW:	82.4 kDa
Concentration:	>0.05 µg/µL as determined by microplate BCA method
Purity:	> 80% as determined by SDS-PAGE and Coomassie blue staining
Buffer:	25 mM Tris-HCl, 100 mM glycine, pH 7.3, 10% glycerol
Preparation:	Recombinant protein was captured through anti-DDK affinity column followed by conventional chromatography steps.
Note:	For testing in cell culture applications, please filter before use. Note that you may experience some loss of protein during the filtration process.
Storage:	Store at -80°C.



[View online »](#)

<b>Stability:</b>	Stable for 12 months from the date of receipt of the product under proper storage and handling conditions. Avoid repeated freeze-thaw cycles.
<b>RefSeq:</b>	<a href="#">NP_000433</a>
<b>Locus ID:</b>	5175
<b>UniProt ID:</b>	<a href="#">P16284</a>
<b>RefSeq Size:</b>	3754
<b>Cytogenetics:</b>	17q23.3
<b>RefSeq ORF:</b>	2214
<b>Synonyms:</b>	CD31; CD31/EndoCAM; endoCAM; GPIIA <sup>v</sup> ; PECA1; PECAM-1
<b>Summary:</b>	The protein encoded by this gene is found on the surface of platelets, monocytes, neutrophils, and some types of T-cells, and makes up a large portion of endothelial cell intercellular junctions. The encoded protein is a member of the immunoglobulin superfamily and is likely involved in leukocyte migration, angiogenesis, and integrin activation. [provided by RefSeq, May 2010]
<b>Protein Families:</b>	Druggable Genome, ES Cell Differentiation/IPS, Transmembrane
<b>Protein Pathways:</b>	Cell adhesion molecules (CAMs), Leukocyte transendothelial migration

### Product images:



Coomassie blue staining of purified PECAM1 protein (Cat# [TP308654]). The protein was produced from HEK293T cells transfected with PECAM1 cDNA clone (Cat# [RC208654]) using MegaTran 2.0 (Cat# [TT210002]).