

Product datasheet for TP308654L

CD31 (PECAM1) (NM_000442) Human Recombinant Protein

Product data:

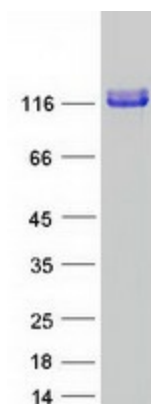
Product Type:	Recombinant Proteins
Description:	Recombinant protein of human platelet/endothelial cell adhesion molecule (PECAM1), 1 mg
Species:	Human
Expression Host:	HEK293T
Expression cDNA Clone or AA Sequence:	>RC208654 representing NM_000442 Red=Cloning site Green=Tags(s)
	<p>MQPRWAQGATMWLGVLLTLLCSSLEGQENSFTINSVDMKSLPDWTVQNGKNLTLQCFADVSTTSHVKPQ HQMLFYKDDVLFYNISSMKSTESYFIPEVRIYDSGTYKCTVIVNNKEKTTAEYQVLVEGVSPRVTLDDK EAIQGGIVRVNCSVPEEKAPIHFTIEKLELNEKMKVCLKREKNSRDQNFVILEFPVEEQDRVLSFRCQARI ISGIHMQTSESTKSELVTVTESFSTPKFHISPTGMIMEGAQLHIKTIQVTHLAQEFPEIIQKDKAIVA HNRHGNKAVYSVMAMVEHSGNYTCKVESSRISKVSSIVVNITELFSKPELESSFTHLDQGERLNLSCSIP GAPPANFTIQKEDTIVSQTQDFTKIASKSDSGTYICTAGIDKVVKKSNTVQIWCCEMLSQPRISYDAQFE VIKGQTIIEVRCESISGTLPISYQLLKTSKVLENSTKNSNDPAVFKDNPTEDVEYQCVADNCHSHAKMLSE VLRVKVIAPVDEVQISILSSKVVESGEDIVLQCAVNEGSGPITYKFYREKEGKPFYQMTSNATQAFWTKQ KANKEQEGEYYCTAFNRANHASSVPRSKILTVRVILAPWKKGLIAVWIIGVIIALLIIAAKCYFLRKAKA KQMPVEMSRPAVPLLNSNNEKMSDPNMEANSHYGHNDVGNHAMKPINDNKEPLNSDVQYTEVQVSSAES HKDLGKKDTETVYSEVRKAVPDAVESRYSRTEGSLDGT</p> <p>TRTRPLEQKLISEEDLAANDILDYKDDDDKV</p>
Tag:	C-Myc/DDK
Predicted MW:	82.4 kDa
Concentration:	>0.05 µg/µL as determined by microplate BCA method
Purity:	> 80% as determined by SDS-PAGE and Coomassie blue staining
Buffer:	25 mM Tris-HCl, 100 mM glycine, pH 7.3, 10% glycerol
Preparation:	Recombinant protein was captured through anti-DDK affinity column followed by conventional chromatography steps.
Note:	For testing in cell culture applications, please filter before use. Note that you may experience some loss of protein during the filtration process.
Storage:	Store at -80°C.



[View online »](#)

Stability:	Stable for 12 months from the date of receipt of the product under proper storage and handling conditions. Avoid repeated freeze-thaw cycles.
RefSeq:	NP_000433
Locus ID:	5175
UniProt ID:	P16284
RefSeq Size:	3754
Cytogenetics:	17q23.3
RefSeq ORF:	2214
Synonyms:	CD31; CD31/EndoCAM; endoCAM; GPIIA ^v ; PECA1; PECAM-1
Summary:	The protein encoded by this gene is found on the surface of platelets, monocytes, neutrophils, and some types of T-cells, and makes up a large portion of endothelial cell intercellular junctions. The encoded protein is a member of the immunoglobulin superfamily and is likely involved in leukocyte migration, angiogenesis, and integrin activation. [provided by RefSeq, May 2010]
Protein Families:	Druggable Genome, ES Cell Differentiation/IPS, Transmembrane
Protein Pathways:	Cell adhesion molecules (CAMs), Leukocyte transendothelial migration

Product images:



Coomassie blue staining of purified PECAM1 protein (Cat# [TP308654]). The protein was produced from HEK293T cells transfected with PECAM1 cDNA clone (Cat# [RC208654]) using MegaTran 2.0 (Cat# [TT210002]).