

## Product datasheet for TP308646

### 14-3-3 theta (YWHAQ) (NM\_006826) Human Recombinant Protein

#### Product data:

Product Type:	Recombinant Proteins
Description:	Recombinant protein of human tyrosine 3-monooxygenase/tryptophan 5-monooxygenase activation protein, theta polypeptide (YWHAQ), 20 µg
Species:	Human
Expression Host:	HEK293T
Expression cDNA Clone or AA Sequence:	>RC208646 protein sequence <b>Red</b> =Cloning site <b>Green</b> =Tags(s)
	MEKTELIQKAKLAEQAERYDDMATCMKAVTEQGAELSNEERNLLSVAYKNVVGRRSAWRVISSIEQKTD TSDKKLQLIKDYREKVESELSICTTVLELLDKYLIANATNPESKVFYLMKMGDYFRYLAEVACGDDRKQ TIDNSQGAYQEAFFDISKKEMQPTHPIRLGLALNFSVFYIEILNNPELACTLAKTAFDEAIAELDTLNEDS YKDSTLIMQLLRDNLTLWTSDSAGEECDAAEGAEN
	<b>TRTRPLEQKLISEEDLAANDILDYKDDDDKV</b>
Tag:	C-Myc/DDK
Predicted MW:	27.6 kDa
Concentration:	>0.05 µg/µL as determined by microplate BCA method
Purity:	> 80% as determined by SDS-PAGE and Coomassie blue staining
Buffer:	25 mM Tris-HCl, 100 mM glycine, pH 7.3, 10% glycerol
Preparation:	Recombinant protein was captured through anti-DDK affinity column followed by conventional chromatography steps.
Note:	For testing in cell culture applications, please filter before use. Note that you may experience some loss of protein during the filtration process.
Storage:	Store at -80°C.
Stability:	Stable for 12 months from the date of receipt of the product under proper storage and handling conditions. Avoid repeated freeze-thaw cycles.
RefSeq:	<u><a href="#">NP_006817</a></u>
Locus ID:	10971



[View online »](#)

UniProt ID: [P27348](#)

RefSeq Size: 2272

Cytogenetics: 2p25.1

RefSeq ORF: 735

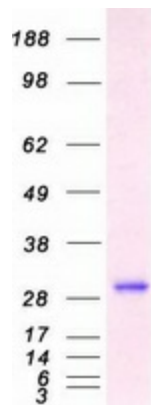
Synonyms: 1C5; 14-3-3; HS1

**Summary:** This gene product belongs to the 14-3-3 family of proteins which mediate signal transduction by binding to phosphoserine-containing proteins. This highly conserved protein family is found in both plants and mammals, and this protein is 99% identical to the mouse and rat orthologs. This gene is upregulated in patients with amyotrophic lateral sclerosis. It contains in its 5' UTR a 6 bp tandem repeat sequence which is polymorphic, however, there is no correlation between the repeat number and the disease. [provided by RefSeq, Jul 2008]

**Protein Families:** Druggable Genome

**Protein Pathways:** Cell cycle, Neurotrophin signaling pathway, Oocyte meiosis, Pathogenic Escherichia coli infection

### Product images:



Coomassie blue staining of purified YWHAQ protein (Cat# TP308646). The protein was produced from HEK293T cells transfected with YWHAQ cDNA clone (Cat# [RC208646]) using MegaTran 2.0 (Cat# [TT210002]).