

## Product datasheet for **TP308623L**

### LRATD1 (NM\_145175) Human Recombinant Protein

#### Product data:

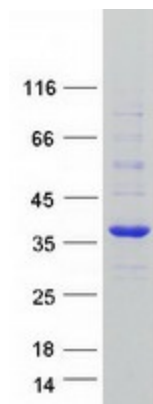
Product Type:	Recombinant Proteins
Description:	Recombinant protein of human family with sequence similarity 84, member A (FAM84A), 1 mg
Species:	Human
Expression Host:	HEK293T
Expression cDNA Clone or AA Sequence:	>RC208623 protein sequence <b>Red</b> =Cloning site <b>Green</b> =Tags(s)
	<p>MGNQLDRITHLNYSELPTGDPSGIEKDELRVGVAYFFSDDEEDLDERGQDPKFGVKAPPGCTPCPESPSR HHHHLLHQLVLNETQFSAFRGQECIFSKVSGGPQGADLSVYAVTALPALCEPGDLLLELLWLQPAPEPPAP APHWAVYVGGGQIIHLHQGEIRQDSLIEAGAANVGRVNSWYRYPRLVAELVVQNACGHLGLKSEEICWT NSESFAAWCRFGKREFKAGGEVPAGTQPPQQYYLKVHLGENKVHTARFHSLEDLIREKRRIDASGRLRV LQELADLVDDKE</p> <p><b>TRTRPLEQKLISEEDLAANDILDYKDDDDKV</b></p>
Tag:	C-Myc/DDK
Predicted MW:	32.3 kDa
Concentration:	>0.05 µg/µL as determined by microplate BCA method
Purity:	> 80% as determined by SDS-PAGE and Coomassie blue staining
Buffer:	25 mM Tris-HCl, 100 mM glycine, pH 7.3, 10% glycerol
Bioactivity:	Immunoprecipitation (PMID: <a href="#">27325759</a> )
Preparation:	Recombinant protein was captured through anti-DDK affinity column followed by conventional chromatography steps.
Note:	For testing in cell culture applications, please filter before use. Note that you may experience some loss of protein during the filtration process.
Storage:	Store at -80°C.
Stability:	Stable for 12 months from the date of receipt of the product under proper storage and handling conditions. Avoid repeated freeze-thaw cycles.
RefSeq:	<a href="#">NP_660158</a>



[View online »](#)

Locus ID:	151354
UniProt ID:	<a href="#">Q96KN4</a>
RefSeq Size:	6366
Cytogenetics:	2p24.3
RefSeq ORF:	876
Synonyms:	FAM84A; NSE1; PP11517
Summary:	May play a role in cell morphology and motility.[UniProtKB/Swiss-Prot Function]

### Product images:



Coomassie blue staining of purified LRATD1 protein (Cat# [TP308623]). The protein was produced from HEK293T cells transfected with LRATD1 cDNA clone (Cat# [RC208623]) using MegaTran 2.0 (Cat# [TT210002]).