

## Product datasheet for TP308623

### LRATD1 (NM\_145175) Human Recombinant Protein

#### Product data:

**Product Type:** Recombinant Proteins  
**Description:** Recombinant protein of human family with sequence similarity 84, member A (FAM84A), 20 µg  
**Species:** Human  
**Expression Host:** HEK293T  
**Expression cDNA Clone or AA Sequence:** >RC208623 protein sequence  
**Red**=Cloning site **Green**=Tags(s)

MGNQLDRITHLNYSELPTGDPSGIEKDELRVGVAYFFSDDEEDLDERGQDPKFGVKAPPGCTPCPEPSR  
HHHHLLHQLVLNETQFSAFRGQECIFSKVSGGPQGADLSVYAVTALPALCEPGDLLLELLWLQPAPEPPAP  
APHWAVYVGGGQIIHLHQGEIRQDSLIEAGAANVGRVNSWYRYPRLVAELVVQNACGHLGLKSEEICWT  
NSESFAAWCRFGKREFKAGGEVPAGTQPPQQYYLKVHLGENKVHTARFHSLEDLIREKRRIDASGRLRV  
LQELADLVDDKE

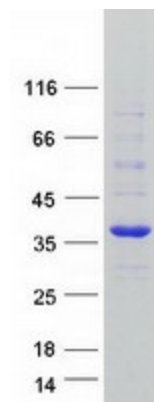
**TR**TRPLEQKLISEEDLAANDILDYKDDDDKV

**Tag:** C-Myc/DDK  
**Predicted MW:** 32.3 kDa  
**Concentration:** >0.05 µg/µL as determined by microplate BCA method  
**Purity:** > 80% as determined by SDS-PAGE and Coomassie blue staining  
**Buffer:** 25 mM Tris-HCl, 100 mM glycine, pH 7.3, 10% glycerol  
**Bioactivity:** Immunoprecipitation (PMID: [27325759](#))  
**Preparation:** Recombinant protein was captured through anti-DDK affinity column followed by conventional chromatography steps.  
**Note:** For testing in cell culture applications, please filter before use. Note that you may experience some loss of protein during the filtration process.  
**Storage:** Store at -80°C.  
**Stability:** Stable for 12 months from the date of receipt of the product under proper storage and handling conditions. Avoid repeated freeze-thaw cycles.  
**RefSeq:** [NP\\_660158](#)



[View online »](#)

Locus ID:	151354
UniProt ID:	<a href="#">Q96KN4</a>
RefSeq Size:	6366
Cytogenetics:	2p24.3
RefSeq ORF:	876
Synonyms:	FAM84A; NSE1; PP11517
Summary:	May play a role in cell morphology and motility.[UniProtKB/Swiss-Prot Function]

**Product images:**

Coomassie blue staining of purified LRATD1 protein (Cat# TP308623). The protein was produced from HEK293T cells transfected with LRATD1 cDNA clone (Cat# [RC208623]) using MegaTran 2.0 (Cat# [TT210002]).