

## Product datasheet for **TP308607M**

### CA13 (NM\_198584) Human Recombinant Protein

#### Product data:

Product Type:	Recombinant Proteins
Description:	Recombinant protein of human carbonic anhydrase XIII (CA13), 100 µg
Species:	Human
Expression Host:	HEK293T
Expression cDNA Clone or AA Sequence:	>RC208607 protein sequence <b>Red</b> =Cloning site <b>Green</b> =Tags(s)

MSRLSWGYPREHNGPIHWKEFFPIADGDQSQSPIEIKTKEVKYDSSLRPLSIKYDPSSAKIISNSGHSFNVD  
FDDTENKSVLRGGPLTGSYRLRQVHLHWGSADDHGSEHIVDGVSYAAELHVVHWNSDKYPSFVEAAHEPD  
GLAVLGVFLQIGEPNSQLQKITDTLDSIKEKQKQTRFTNFDLLSLLPPSWDYWTYPGSLTVPPLLESVTW  
IVLKQPINISSQQLAKFRSLLCTAEGEAAAFLVSNHRPPQPLKGRKVRASFH

**TRTRPLEQKLISEEDLAANDILDYKDDDDKV**

Tag:	C-Myc/DDK
Predicted MW:	29.3 kDa
Concentration:	>0.05 µg/µL as determined by microplate BCA method
Purity:	> 80% as determined by SDS-PAGE and Coomassie blue staining
Buffer:	25 mM Tris-HCl, 100 mM glycine, pH 7.3, 10% glycerol
Preparation:	Recombinant protein was captured through anti-DDK affinity column followed by conventional chromatography steps.
Note:	For testing in cell culture applications, please filter before use. Note that you may experience some loss of protein during the filtration process.
Storage:	Store at -80°C.
Stability:	Stable for 12 months from the date of receipt of the product under proper storage and handling conditions. Avoid repeated freeze-thaw cycles.
RefSeq:	<a href="#">NP_940986</a>
Locus ID:	377677
UniProt ID:	<a href="#">Q8N1Q1</a>



[View online »](#)

RefSeq Size: 3855

Cytogenetics: 8q21.2

RefSeq ORF: 786

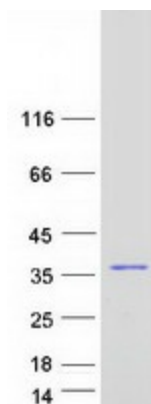
Synonyms: CAXIII

**Summary:** Carbonic anhydrases (CAs) are a family of zinc metalloenzymes. For background information on the CA family, see MIM 114800.[supplied by OMIM, Mar 2008]

**Protein Families:** Druggable Genome

**Protein Pathways:** Nitrogen metabolism

### Product images:



Coomassie blue staining of purified CA13 protein (Cat# [TP308607]). The protein was produced from HEK293T cells transfected with CA13 cDNA clone (Cat# [RC208607]) using MegaTran 2.0 (Cat# [TT210002]).