

Product datasheet for **TP308596M**

Serum Response Factor (SRF) (NM_003131) Human Recombinant Protein

Product data:

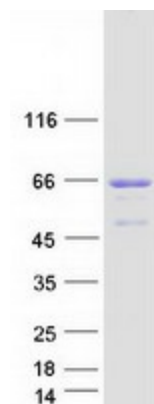
Product Type:	Recombinant Proteins
Description:	Recombinant protein of human serum response factor (c-fos serum response element-binding transcription factor) (SRF), 100 µg
Species:	Human
Expression Host:	HEK293T
Expression cDNA Clone or AA Sequence:	>RC208596 representing NM_003131 Red =Cloning site Green =Tags(s) MLPTQAGAAAALGRGSALGGSLNRTPTGRPGGGGTRGANGGRVPGNGAGLGPGRLEREAAAAAATTPAP TAGALYSGSEGDSESGEEEEELGAERRGLKRSLSEMEIGMVVGGPEASAAATGGYGPVSGAVSGAKPGKKT RGRVKIKMEFIDNKLRRYTTFSKRKTGIMKKAYELSTLTGTQVLLLLVASETGHVYTFATRKLQPMITSET GKALIQTCLNSPDSPPRSDPTTDQRMSATGFEETDLTYQVSESDSSGETKDTLKPFTVTNLPGTTSTIQ TAPSTSTTMQVSSGPSFPITNYLAPVSASVSPSAVSSANGTVLKSTGSGPVSSGGLMQLPTSFTLMPGGA VAQQVPVQAIQVHQAPQQASPSRDSSTDLTQTSSSGTVLTPATIMTSSVPTTVGGHMMYPSPHAVMYAPT SGLGDGSLTVLNAFSQAPSTMQVSHSQVQEPGGVPQVFLTASSGTQIPVSAVQLHQMAVIGQQAGSSSN LTELQVWNLDTAHSTKSE TRTRPLEQKLISEEDLAANDILDYKDDDDKV
Tag:	C-Myc/DDK
Predicted MW:	51.4 kDa
Concentration:	>0.05 µg/µL as determined by microplate BCA method
Purity:	> 80% as determined by SDS-PAGE and Coomassie blue staining
Buffer:	25 mM Tris-HCl, 100 mM glycine, pH 7.3, 10% glycerol
Preparation:	Recombinant protein was captured through anti-DDK affinity column followed by conventional chromatography steps.
Note:	For testing in cell culture applications, please filter before use. Note that you may experience some loss of protein during the filtration process.
Storage:	Store at -80°C.



[View online »](#)

Stability:	Stable for 12 months from the date of receipt of the product under proper storage and handling conditions. Avoid repeated freeze-thaw cycles.
RefSeq:	NP_003122
Locus ID:	6722
UniProt ID:	P11831 , A0A024RD16
RefSeq Size:	4343
Cytogenetics:	6p21.1
RefSeq ORF:	1524
Synonyms:	MCM1
Summary:	This gene encodes a ubiquitous nuclear protein that stimulates both cell proliferation and differentiation. It is a member of the MADS (MCM1, Agamous, Deficiens, and SRF) box superfamily of transcription factors. This protein binds to the serum response element (SRE) in the promoter region of target genes. This protein regulates the activity of many immediate-early genes, for example c-fos, and thereby participates in cell cycle regulation, apoptosis, cell growth, and cell differentiation. This gene is the downstream target of many pathways; for example, the mitogen-activated protein kinase pathway (MAPK) that acts through the ternary complex factors (TCFs). Two transcript variants encoding different isoforms have been found for this gene. [provided by RefSeq, May 2014]
Protein Families:	Druggable Genome, Transcription Factors
Protein Pathways:	MAPK signaling pathway

Product images:



Coomassie blue staining of purified SRF protein (Cat# [TP308596]). The protein was produced from HEK293T cells transfected with SRF cDNA clone (Cat# [RC208596]) using MegaTran 2.0 (Cat# [TT210002]).