

Product datasheet for **TP308593L**

TCL1B (NM_004918) Human Recombinant Protein

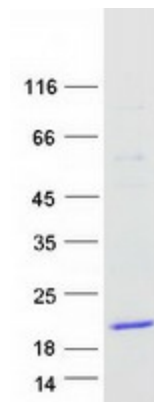
Product data:

Product Type:	Recombinant Proteins
Description:	Recombinant protein of human T-cell leukemia/lymphoma 1B (TCL1B), transcript variant 1, 1 mg
Species:	Human
Expression Host:	HEK293T
Expression cDNA Clone or AA Sequence:	>RC208593 protein sequence Red =Cloning site Green =Tags(s)
	MASEASVRLGVPPGRLWIQRPGIYEDEEGRTWVTVVVRFNPSRREWARASQGSRYEPSITVHLWQMAVH T RELLSSGQMPFSQLPAVWQLYPRRKYRAADSSFWEIADHGQIDSMEQLVLTQPERKD TRTRPLEQKLISEEDLAANDILDYKDDDDKV
Tag:	C-Myc/DDK
Predicted MW:	14.7 kDa
Concentration:	>0.05 µg/µL as determined by microplate BCA method
Purity:	> 80% as determined by SDS-PAGE and Coomassie blue staining
Buffer:	25 mM Tris-HCl, 100 mM glycine, pH 7.3, 10% glycerol
Preparation:	Recombinant protein was captured through anti-DDK affinity column followed by conventional chromatography steps.
Note:	For testing in cell culture applications, please filter before use. Note that you may experience some loss of protein during the filtration process.
Storage:	Store at -80°C.
Stability:	Stable for 12 months from the date of receipt of the product under proper storage and handling conditions. Avoid repeated freeze-thaw cycles.
RefSeq:	<u>NP_004909</u>
Locus ID:	9623
UniProt ID:	<u>O95988</u>


[View online »](#)

RefSeq Size:	1172
Cytogenetics:	14q32.13
RefSeq ORF:	384
Synonyms:	SYN-1; TML1
Summary:	Enhances the phosphorylation and activation of AKT1 and AKT2.[UniProtKB/Swiss-Prot Function]

Product images:



Coomassie blue staining of purified TCL1B protein (Cat# [TP308593]). The protein was produced from HEK293T cells transfected with TCL1B cDNA clone (Cat# [RC208593]) using MegaTran 2.0 (Cat# [TT210002]).