

## Product datasheet for **TP308582M**

### SIGLEC8 (NM\_014442) Human Recombinant Protein

#### Product data:

Product Type:	Recombinant Proteins
Description:	Recombinant protein of human sialic acid binding Ig-like lectin 8 (SIGLEC8), 100 µg
Species:	Human
Expression Host:	HEK293T
Expression cDNA	>RC208582 protein sequence
Clone or AA Sequence:	Red=Cloning site Green=Tags(s)

MLLLLLLLPLLWGTKGMEGDRQYGDGYLLQVQELVTVQEGLCVHVPCSFSPQDGTWSDPVGHWFRAG  
DRPYQDAPVATNNDREVQAETQGRFQLLDGIWSNDCSLSDARKRDKGSYFFRLERGSWKWSYKSQLN  
YKTKQLSVFVTALHTRPDILILGTLESGHPRNLTCVWPWACKQGTTPMISWIGASVSSPGPTTARSSVLT  
LTPKQDHTSLTCQVTLPGTGVTSTVRLDVSYPWNLTMTVFQGDASTALGNGSSLSVLEGQSLR  
LVCAVNSNPPARLSWTRGSLTLCPSRSSNPGLLELPRVHVRDEGEFTCRAQNAQGSQHISLSLQNEGT  
GTSRPVSQVTLAAVGGAGATALAFLSFCIIIVRSCRKKSARPAAGVGDGTGMEKAIKRGASQGPLTE  
SWKDG NPLKPPAVAPSSGEEGELHYATLSFHVKVPQDPQGEATDSEYSEIKIHKRETAETQAACLRNH  
NPSSKEVRG

TRTRPLEQKLISEEDLAANDILDYKDDDDKV

Tag:	C-Myc/DDK
Predicted MW:	53.9 kDa
Concentration:	>0.05 µg/µL as determined by microplate BCA method
Purity:	> 80% as determined by SDS-PAGE and Coomassie blue staining
Buffer:	25 mM Tris-HCl, 100 mM glycine, pH 7.3, 10% glycerol
Preparation:	Recombinant protein was captured through anti-DDK affinity column followed by conventional chromatography steps.
Note:	For testing in cell culture applications, please filter before use. Note that you may experience some loss of protein during the filtration process.
Storage:	Store at -80°C.
Stability:	Stable for 12 months from the date of receipt of the product under proper storage and handling conditions. Avoid repeated freeze-thaw cycles.



[View online >](#)

RefSeq: [NP\\_055257](#)

Locus ID: 27181

UniProt ID: [Q9NYZ4](#)

RefSeq Size: 2967

Cytogenetics: 19q13.41

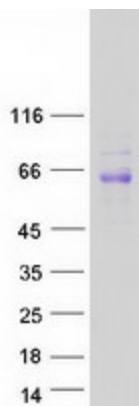
RefSeq ORF: 1497

Synonyms: SAF2; SIGLEC-8; SIGLEC8L

**Summary:** Sialic acid-binding immunoglobulin (Ig)-like lectins, or SIGLECs (e.g., CD33 (MIM 159590)), are a family of type 1 transmembrane proteins each having a unique expression pattern, mostly in hemopoietic cells. SIGLEC8 is a member of the CD33-like subgroup of SIGLECs, which are localized to 19q13.3-q13.4 and have 2 conserved cytoplasmic tyrosine-based motifs: an immunoreceptor tyrosine-based inhibitory motif, or ITIM (see MIM 604964), and a motif homologous to one identified in signaling lymphocyte activation molecule (SLAM; MIM 603492) that mediates an association with SLAM-associated protein (SAP; MIM 300490) (summarized by Foussias et al., 2000 [PubMed 11095983]).[supplied by OMIM, May 2010]

**Protein Families:** Druggable Genome, Transmembrane

### Product images:



Coomassie blue staining of purified SIGLEC8 protein (Cat# [TP308582]). The protein was produced from HEK293T cells transfected with SIGLEC8 cDNA clone (Cat# [RC208582]) using MegaTran 2.0 (Cat# [TT210002]).