

Product datasheet for **TP308575L**

CPA4 (NM_016352) Human Recombinant Protein

Product data:

Product Type:	Recombinant Proteins
Description:	Recombinant protein of human carboxypeptidase A4 (CPA4), 1 mg
Species:	Human
Expression Host:	HEK293T
Expression cDNA Clone or AA Sequence:	>RC208575 protein sequence Red =Cloning site Green =Tags(s)
	<p>MRWILFIGALIGSSICGQEKFFGDQVLRINVRNGDEISKLSQLVNSNNLKLNFWKSPSSFNRPVDVLVPS VSLQAFKSFLRSQGLEAVTIEDLQALLDNEDDEMQRHNEGQERSSNNFNFGAYHSLEAIYHEMDNIAADF PDLARRVKIGHSFENRPMYVLKFSTGKGVRRPAVWLNAGIHSREWISQATAIWTARKIVSDYQRDPAITS ILEKMDIFLLPVANPDGYVYTQTQNRLWRKTRSRNPGSSCIGADPNRNWNASFAGKGASDNPCSEVYHGP HANSEVEVKSVDIFIQKHGNFKGFIDLHSYSQLLMYPYGYSVKKAPDAEELDKVARLAALKALASVSGTEY QVGPTCTVYPASGSSIDWAYDNGIKFAFTFELRDTGTYGFLLPANQIIPTAETWLGLKTIMEHVRDNL Y</p> <p>TRTRPLEQKLISEEDLAANDILDYKDDDDKV</p>
Tag:	C-Myc/DDK
Predicted MW:	45.5 kDa
Concentration:	>0.05 µg/µL as determined by microplate BCA method
Purity:	> 80% as determined by SDS-PAGE and Coomassie blue staining
Buffer:	25 mM Tris-HCl, 100 mM glycine, pH 7.3, 10% glycerol
Preparation:	Recombinant protein was captured through anti-DDK affinity column followed by conventional chromatography steps.
Note:	For testing in cell culture applications, please filter before use. Note that you may experience some loss of protein during the filtration process.
Storage:	Store at -80°C.
Stability:	Stable for 12 months from the date of receipt of the product under proper storage and handling conditions. Avoid repeated freeze-thaw cycles.
RefSeq:	<u>NP_057436</u>



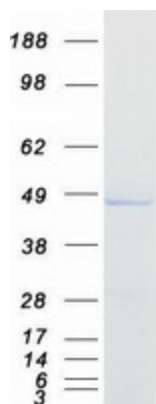
[View online »](#)

Locus ID: 51200
UniProt ID: [Q9UI42](#), [A4D1M3](#)
RefSeq Size: 2817
Cytogenetics: 7q32.2
RefSeq ORF: 1263
Synonyms: CPA3

Summary: This gene is a member of the carboxypeptidase A/B subfamily, and it is located in a cluster with three other family members on chromosome 7. Carboxypeptidases are zinc-containing exopeptidases that catalyze the release of carboxy-terminal amino acids, and are synthesized as zymogens that are activated by proteolytic cleavage. This gene could be involved in the histone hyperacetylation pathway. It is imprinted and may be a strong candidate gene for prostate cancer aggressiveness. [provided by RefSeq, Jul 2008]

Protein Families: Druggable Genome, Protease, Secreted Protein

Product images:



Coomassie blue staining of purified CPA4 protein (Cat# [TP308575]). The protein was produced from HEK293T cells transfected with CPA4 cDNA clone (Cat# [RC208575]) using MegaTran 2.0 (Cat# [TT210002]).