

Product datasheet for **TP308566L**

FUCA2 (NM_032020) Human Recombinant Protein

Product data:

Product Type:	Recombinant Proteins
Description:	Purified recombinant protein of Human fucosidase, alpha-L- 2, plasma (FUCA2),full length, with C-terminal MYC/DDK tag, expressed in HEK293 cells, 1 mg
Species:	Human
Expression Host:	HEK293
Expression cDNA	>RC208566 representing NM_032020
Clone or AA Sequence:	Red=Cloning site Green=Tags(s)

MRPQELPRLAFPLLLLLLLLLPPPPCPAHSATRFDPTWESLDARQLPAWFDQAKFGIFIHWGVFSVPSFG
SEWFWWYQKEKIPKYVEFMKDNYPFSKYEDFGPLFTAKFFNANQWADIFQASGAKYIVLTSKHHEGFT
LWGSEYSWNWNAIDEGPKRDIVKELEVAIRNRTDLRFGLYSLFEWFHPLFLEDESSSFHKRQFPVSKTL
PELYELVNNYQPEVLWSDGDDGAPDQYWNSTGFLAWLYNESPVGRGTVTNDRWGAGSICKHGGFYTCSDR
YNPGHLLPHKWENCMTIDKLSWGYRREAGISDYLTIEELVKQLVETVSCGGNLLMNIGPTLDGTISVVF
ERLRQVGSWLKVNGEAIYETYTWRSQNDTVPDVWYTSKPKEKLVAIFLKWPTSGQLFLGHPKAILGAT
EVKLLGHGQPLNWSLEQNGIMVELPQLTIHQMPCKWGWALALTNVI

TRTRPLEQKLISEEDLAANDILDYKDDDDKV

Tag:	C-Myc/DDK
Predicted MW:	53.9 kDa
Concentration:	>0.05 µg/µL as determined by microplate BCA method
Purity:	> 80% as determined by SDS-PAGE and Coomassie blue staining
Buffer:	25 mM Tris-HCl, 100 mM glycine, pH 7.3, 10% glycerol
Preparation:	Recombinant protein was captured through anti-DDK affinity column followed by conventional chromatography steps.
Note:	For testing in cell culture applications, please filter before use. Note that you may experience some loss of protein during the filtration process.
Storage:	Store at -80°C.
Stability:	Stable for 12 months from the date of receipt of the product under proper storage and handling conditions. Avoid repeated freeze-thaw cycles.



[View online >](#)

RefSeq: [NP_114409](#)

Locus ID: 2519

UniProt ID: [Q9BTY2](#)

RefSeq Size: 2098

Cytogenetics: 6q24.2

RefSeq ORF: 1401

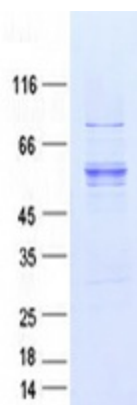
Synonyms: dj20N2.5

Summary: This gene encodes a plasma alpha-L-fucosidase, which represents 10-20% of the total cellular fucosidase activity. The protein is a member of the glycosyl hydrolase 29 family, and catalyzes the hydrolysis of the alpha-1,6-linked fucose joined to the reducing-end N-acetylglucosamine of the carbohydrate moieties of glycoproteins. This enzyme is essential for *Helicobacter pylori* adhesion to human gastric cancer cells. [provided by RefSeq, Aug 2010]

Protein Families: Druggable Genome, Secreted Protein

Protein Pathways: Other glycan degradation

Product images:



Coomassie blue staining of purified FUCA2 protein (Cat# [TP308566]). The protein was produced from HEK293T cells transfected with FUCA2 cDNA clone (Cat# [RC208566]) using MegaTran 2.0 (Cat# [TT210002]).