

Product datasheet for TP308562

Collagen VI (COL6A1) (NM_001848) Human Recombinant Protein

Product data:

Product Type: Recombinant Proteins

Description: Recombinant protein of human collagen, type VI, alpha 1 (COL6A1), 20 µg

Species: Human

Expression Host: HEK293T

Expression cDNA >RC208562 protein sequence

Clone or AA Red=Cloning site Green=Tags(s)

Sequence:

MRAARALLPLLLQACWTAQAQDEPETPRAVAFQDCPVDLFFVLDTSESVALRLKPYGALVDKVKSFTRFI
 DNLRDRYYRCDRNLVWNAGALHYSDEVEIIQGLTRMPGGRDALKSSVDAVKYFGKGYTDCAIKKGLEQL
 LVGGSHLKENKYLIVVTDGHPLEGYKEPCGGLEDVNEAKHLGVKVFVAITPDHLEPRLSIATDHTYR
 RNFTAADWQSRDAEEAISQTIDTIVDMIKNNVEQVCCSFECQPARGPPGLRGDPGFEGERGKPLPGEK
 GEAGDPGRPGDLGPVGYQGMKGEKGSRGEKGSRGPKGYKGEKGRGIDGVDGVKGMGYPLPGCKGSPG
 FDGIQPPGPKGDPGAFGLKGEKGEPEGADGEAGRPSSGSGDEGQPGEPGPPGEKGEAGDEGNPDPGA
 PGERGGPGERGPRGTPGTRGPRGDPGEAGPQGDQGREGPVGVGDPGEAGPIGPKGYRGDEGPPGSEGAR
 GAPGPAGPPGDPGLMGERGEDGPAGNGTEGFPGFPGYPGNRGAPGINGTKGYPLKGDGEAGDPGDDNN
 DIAPRGVKGAKGYRPEGPQGGPHQGGPDECEILDIIIMKMCSCCECKCGPIDLLFVLDSSSEISGLQN
 FEIAKDFVVKVIDRLSRDELVKFEPGQSYAGVQYSHSQMQEHVSLRSPSIRNVQELKEAIKSLQWMAGG
 TFTGEALQYTRDQLLPPSPNNRIALVITDGRSDTQRDTPNLVLCSPGIQVSVGIKDVDFIPGSDQLN
 VISCQGLAPSQGRPGLSLVKENYAELEDAFLKNVTAQICIDKKCPDYTCPITFSSPADITILLDGSASV
 GSHNFDTTKRFKRAERFLTAGRTDPAHDVRAVAVVQYSGTGQQRPERASLQFLQNYTALASAVDAMDFI
 NDATDVNDALGYVTRFYREASSGAAKKRLLLFSDGNSQGATPAAIEKAVQEAQRAGIEIFVVVGRQVNE
 PHIRVLVTGKTAEYDVAYGESHLFRVPSYQALLRGVFHQTVSRKVALG

TRTRPLEQKLISEEDLAANDILDYKDDDDKV

Tag: C-Myc/DDK

Predicted MW: 106.4 kDa

Concentration: >0.05 µg/µL as determined by microplate BCA method

Purity: > 80% as determined by SDS-PAGE and Coomassie blue staining

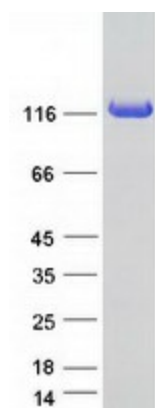
Buffer: 25 mM Tris-HCl, 100 mM glycine, pH 7.3, 10% glycerol



[View online »](#)

Preparation:	Recombinant protein was captured through anti-DDK affinity column followed by conventional chromatography steps.
Note:	For testing in cell culture applications, please filter before use. Note that you may experience some loss of protein during the filtration process.
Storage:	Store at -80°C.
Stability:	Stable for 12 months from the date of receipt of the product under proper storage and handling conditions. Avoid repeated freeze-thaw cycles.
RefSeq:	NP_001839
Locus ID:	1291
UniProt ID:	P12109 , A0A384P5H7
RefSeq Size:	4246
Cytogenetics:	21q22.3
RefSeq ORF:	3084
Synonyms:	BTHLM1; OPLL; UCHMD1
Summary:	The collagens are a superfamily of proteins that play a role in maintaining the integrity of various tissues. Collagens are extracellular matrix proteins and have a triple-helical domain as their common structural element. Collagen VI is a major structural component of microfibrils. The basic structural unit of collagen VI is a heterotrimer of the alpha1(VI), alpha2(VI), and alpha3(VI) chains. The alpha2(VI) and alpha3(VI) chains are encoded by the COL6A2 and COL6A3 genes, respectively. The protein encoded by this gene is the alpha 1 subunit of type VI collagen (alpha1(VI) chain). Mutations in the genes that code for the collagen VI subunits result in the autosomal dominant disorder, Bethlem myopathy. [provided by RefSeq, Jul 2008]
Protein Pathways:	ECM-receptor interaction, Focal adhesion

Product images:



Coomassie blue staining of purified COL6A1 protein (Cat# TP308562). The protein was produced from HEK293T cells transfected with COL6A1 cDNA clone (Cat# [RC208562]) using MegaTran 2.0 (Cat# [TT210002]).