

## Product datasheet for **TP308548M**

### PPP1R16A (NM\_032902) Human Recombinant Protein

#### Product data:

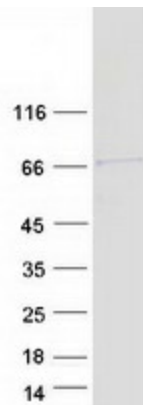
|                                       |   |
|---------------------------------------|---|
| Product Type:                         | Recombinant Proteins  |
| Description:                          | Recombinant protein of human protein phosphatase 1, regulatory (inhibitor) subunit 16A (PPP1R16A), 100 µg   |
| Species:                              | Human   |
| Expression Host:                      | HEK293T   |
| Expression cDNA Clone or AA Sequence: | >RC208548 representing NM_032902<br><b>Red</b> =Cloning site <b>Green</b> =Tags(s)<br><br>MAEHLELLAEMPMVGRMSTQERLKHAKRRAQVVKMWAQAEKEAQGKKGPGERPRKEAASQGLLKQVLFPSVLLLEAAARNDLLEVRQFLGSGVSPDLANEDGLTALHQQCIDDFREMVQQLLEAGANINACDSECWTP LHAATCGHLHLVELLIASGANLLAVNTDGNMPYDLCDDDEQTLDCLETAMADRGITQDSIEAARAVPELR MLDDIRSLQAGADLHAPLDHGATLLHVAANGFSEAAALLLEHRASLSAKDQDGEPLHAAAYWQVPL VELLVAHGADLNAKSLMDETPLDVCGDDEVRAKLLELKHKHDALLRAQSRQRSLRRRTSSAGSRGKVV RVSLTQRTDLYRKQHAQEAIWVQQPPPTSPEPPEDNDDRQTGAELRPPPEEDNPEVVRPHNGRVGGSPV RHLYSKRLDRSVSYQLSPLDSTTPHTLVHDKAHTLADLKRQRAAAKLQRPPEGPESPETAEPGLPGDT VTPQPCDGFRAAGDPPLLKLTAPAVEAPVERRPCCLLM<br><br><b>TRTRPLEQKLISEEDLAANDILDYKDDDDKV</b> |
| Tag:                                  | C-Myc/DDK   |
| Predicted MW:                         | 57.6 kDa  |
| Concentration:                        | >0.05 µg/µL as determined by microplate BCA method  |
| Purity:                               | > 80% as determined by SDS-PAGE and Coomassie blue staining   |
| Buffer:                               | 25 mM Tris-HCl, 100 mM glycine, pH 7.3, 10% glycerol  |
| Preparation:                          | Recombinant protein was captured through anti-DDK affinity column followed by conventional chromatography steps.  |
| Note:                                 | For testing in cell culture applications, please filter before use. Note that you may experience some loss of protein during the filtration process.  |
| Storage:                              | Store at -80°C.   |



[View online »](#)

|                      |   |
|----------------------|---|
| <b>Stability:</b>    | Stable for 12 months from the date of receipt of the product under proper storage and handling conditions. Avoid repeated freeze-thaw cycles.   |
| <b>RefSeq:</b>       | <a href="#">NP_116291</a>   |
| <b>Locus ID:</b>     | 84988   |
| <b>UniProt ID:</b>   | <a href="#">Q96I34</a>  |
| <b>RefSeq Size:</b>  | 2326  |
| <b>Cytogenetics:</b> | 8q24.3  |
| <b>RefSeq ORF:</b>   | 1584  |
| <b>Synonyms:</b>     | MYPT3   |
| <b>Summary:</b>      | Myosin light chain kinase and phosphatase (MLCP) complexes control the phosphorylation states of regulatory myosin light chains, which is crucial for muscle and intracellular movement. MLCPs typically contain a catalytic protein phosphatase 1 (PP1c) subunit, a myosin phosphatase targeting (MYPT) subunit, and another smaller subunit. The protein encoded by this gene represents an MYPT subunit, which is responsible for directing PP1c to its intended targets. However, while the phosphorylation of other MYPT members results in PP1c inactivation, phosphorylation of the encoded protein by protein kinase A results in PP1c activation. [provided by RefSeq, Jan 2020] |

### Product images:



Coomassie blue staining of purified PPP1R16A protein (Cat# [TP308548]). The protein was produced from HEK293T cells transfected with PPP1R16A cDNA clone (Cat# [RC208548]) using MegaTran 2.0 (Cat# [TT210002]).