

Product datasheet for TP308538M

TMEM102 (NM_178518) Human Recombinant Protein

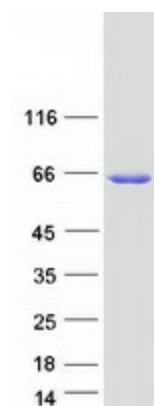
Product data:

| | |
|---------------------------------------|--|
| Product Type: | Recombinant Proteins |
| Description: | Recombinant protein of human transmembrane protein 102 (TMEM102), 100 µg |
| Species: | Human |
| Expression Host: | HEK293T |
| Expression cDNA Clone or AA Sequence: | >RC208538 protein sequence Red =Cloning site Green =Tags(s) MASAVWGSAPWWGPPPPAPARPLTDIDFCSGAQLQELTQLIQELGVQESWSDGPKPGADLLRAKDFVFS L LGLVHRRDPRFPPQAELLLLRRGGIREGSLDLGHAPLGPYARGPHYDAGFTLLVPMFSLDGTQLDLESC YAQVCLPEMVCGTPIREMWDCLGPPVPGARDSIHRTSEESSKDWQSSVDQPHSYVTEHEAPVSLEKSP SDVSASESPQHVDVLDGSTAPLKTMSDVTKAAVESPVKPKSEAREAWPTLCSAQVAAWFFATLAAVAES LIPVPGAPRLVHAARHAGFTTVLLATPEPPRRLLLFDLIPVSVAGWPEGARSHSWAGPLASESASFYLV PGGGTERPCASAWQLCFARQELALKARIPAPLLQAHAAAQALLRPLVAGTRAAAPYLLRLLYWACERLP ALYLARPENAGACCLGLLDELGRVLEAGTLPHYFLNGRQLRTGDDSAALLGELARLRGDPARALRAAVEE AKVARKGGGLAGVGGGAH TR TRPLEQKLISEEDLAANDILDYKDDDDKV |
| Tag: | C-Myc/DDK |
| Predicted MW: | 54 kDa |
| Concentration: | >0.05 µg/µL as determined by microplate BCA method |
| Purity: | > 80% as determined by SDS-PAGE and Coomassie blue staining |
| Buffer: | 25 mM Tris-HCl, 100 mM glycine, pH 7.3, 10% glycerol |
| Preparation: | Recombinant protein was captured through anti-DDK affinity column followed by conventional chromatography steps. |
| Note: | For testing in cell culture applications, please filter before use. Note that you may experience some loss of protein during the filtration process. |
| Storage: | Store at -80°C. |


[View online »](#)

| | |
|----------------------|---|
| Stability: | Stable for 12 months from the date of receipt of the product under proper storage and handling conditions. Avoid repeated freeze-thaw cycles. |
| RefSeq: | <u>NP_848613</u> |
| Locus ID: | 284114 |
| UniProt ID: | <u>Q8N9M5</u> |
| RefSeq Size: | 1996 |
| Cytogenetics: | 17p13.1 |
| RefSeq ORF: | 1524 |
| Synonyms: | CBAP |
| Summary: | Selectively involved in CSF2 deprivation-induced apoptosis via a mitochondria-dependent pathway.[UniProtKB/Swiss-Prot Function] |

Product images:



Coomassie blue staining of purified TMEM102 protein (Cat# [TP308538]). The protein was produced from HEK293T cells transfected with TMEM102 cDNA clone (Cat# [RC208538]) using MegaTran 2.0 (Cat# [TT210002]).