

Product datasheet for TP308538L

TMEM102 (NM_178518) Human Recombinant Protein

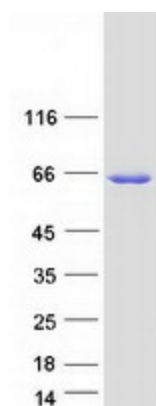
Product data:

Product Type:	Recombinant Proteins
Description:	Recombinant protein of human transmembrane protein 102 (TMEM102), 1 mg
Species:	Human
Expression Host:	HEK293T
Expression cDNA Clone or AA Sequence:	>RC208538 protein sequence Red =Cloning site Green =Tags(s) MASAVWGSAPWWGPPPPAPARPLTDIDFCSGAQLQELTQLIQELGVQESWSDGPKPGADLLRAKDFVFS L LGLVHRRDPRFPPQAELLLLRGGIREGSLDLGHAPLGPYARGPHYDAGFTLLVPMFSLDGTELQLDLESC YAQVCLPEMVCGTPIREMWDCLGPPVPGARDSIHRTSEESSKDWQSSVDQPHSYVTEHEAPVSLEKSP SDVSASESPQHDVVDLGSTAPLKTMSDDVTAAVESPVPKPSEAREAWPTLCSAQVAAWFFATLAAVAES LIPVPGAPRLVHAARHAGFTTVLLATPEPPRRLLFDLIPVSVAGWPEGARSHSWAGPLASESASFYLV PGGGTERPCASAWQLCFARQELALKARIPAPLLQAHAAAQALLRPLVAGTRAAAPYLLRLLYWACERLP ALYLARPENAGACCLGLLDELGRVLEAGTLPHYFLNGRQLRTGDDSAALLGELARLRGDPARALRAAVEE AKVARKGGGLAGVGGGAH TR TRPLEQKLISEEDLAANDILDYKDDDDKV
Tag:	C-Myc/DDK
Predicted MW:	54 kDa
Concentration:	>0.05 µg/µL as determined by microplate BCA method
Purity:	> 80% as determined by SDS-PAGE and Coomassie blue staining
Buffer:	25 mM Tris-HCl, 100 mM glycine, pH 7.3, 10% glycerol
Preparation:	Recombinant protein was captured through anti-DDK affinity column followed by conventional chromatography steps.
Note:	For testing in cell culture applications, please filter before use. Note that you may experience some loss of protein during the filtration process.
Storage:	Store at -80°C.


[View online »](#)

Stability:	Stable for 12 months from the date of receipt of the product under proper storage and handling conditions. Avoid repeated freeze-thaw cycles.
RefSeq:	NP_848613
Locus ID:	284114
UniProt ID:	Q8N9M5
RefSeq Size:	1996
Cytogenetics:	17p13.1
RefSeq ORF:	1524
Synonyms:	CBAP
Summary:	Selectively involved in CSF2 deprivation-induced apoptosis via a mitochondria-dependent pathway.[UniProtKB/Swiss-Prot Function]

Product images:



Coomassie blue staining of purified TMEM102 protein (Cat# [TP308538]). The protein was produced from HEK293T cells transfected with TMEM102 cDNA clone (Cat# [RC208538]) using MegaTran 2.0 (Cat# [TT210002]).