

Product datasheet for TP308517L

MAN2C1 (NM_006715) Human Recombinant Protein

Product data:

Product Type:	Recombinant Proteins
Description:	Recombinant protein of human mannosidase, alpha, class 2C, member 1 (MAN2C1), 1 mg
Species:	Human
Expression Host:	HEK293T
Expression cDNA	>RC208517 protein sequence
Clone or AA Sequence:	Red=Cloning site Green=Tags(s)

MAAAPALKHWRTTLERVEKFVSPLYFTDCNLRGRFLGASCPVAVLSSFLTPERLPYQEAVQRDFRPAQVG
 DSFGPTWWTCWFRVELTIPEAWVGQEVHLCWESDGEGLVWRDGEVPVQGLTKEGEKTSYVLTDRLGGERDPR
 SLTLVVEVACNGLLGAGKGSMIAAPDPEKMFQLSRAELAVFHRDVHMLLVDELELLGLIAKGLGKDNQRSF
 QALYTANQMVNVCDPAQPETFPVAQALASRFFGQHGGESQHTIHATGHCHIDTAWLWPFKETVRKCARSW
 VTALQLMERNPEFIFACSQAAQLEWVKSRYPGLYSRIQEFACRGQFVPVGGTWVEMDGNLPSGEAMVRQF
 LQGQNFFLQEFGKMCSEFWLPDTFGYSAQLPQIMHGCGRIRFLTQKLSWNLVNSFPHHTFFWEGLDGSRV
 LVHFPPGDSYGMQGSVEEVLTVANNRDKGRANHSALFLFGFDGGGGPTQTMLDRLKRLSNTDGLPRVQL
 SSPRQLFSALESSEQLCTWVGELFLELHNGTYTTHAQIKKGNRECEILHDVELLSLALARSAQFLYP
 AAQLQHLWRLLLNQFHDVVTGSCIQMVAAEAMCHYEDIRSHGNTLLSAAAAALCAGEPGPEGLLIVNTL
 PWKRIEVMALPKPGGAHSLALVTVPMSMGYAPVPPPTSLQPLLQQPVFVQETDGSVTLDNIGIRVKLDP
 TGRLTSLVLVASGREIAEGAVGNQFVLFDDVPLYWDAWDVMDYHLETRKPVLGQAGTLAVGTEGGLRGS
 AWFLQISPNSRLSQEVVLDVGCPYVRFHTEVHWHEAHKFLKVEFPARVRSSQATYIEQFGHLQRPHTYN
 TSWDWARFEVWAHRWMDLSEHGFGGLALLNDCKYGASVRGSILSLSLRAPKAPDATADTGRHEFTYALMP
 HKGSFQDAGVIQAAYSLNFPLLALPASPAPATSWSAFSVSSPAVVLETVKQAESSPQRRSLVRLRYEAH
 GSHVDCWLHLSLPVQEAILCDLLERPDPAGHLTLRDNRLKLTFSFPQVLSLLLVLQPPPH

TRTRPLEQKLISEEDLAANDILDYKDDDDKV

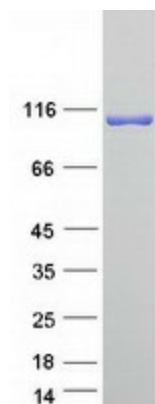
Tag:	C-Myc/DDK
Predicted MW:	115.7 kDa
Concentration:	>0.05 µg/µL as determined by microplate BCA method
Purity:	> 80% as determined by SDS-PAGE and Coomassie blue staining
Buffer:	25 mM Tris-HCl, 100 mM glycine, pH 7.3, 10% glycerol



[View online »](#)

Preparation:	Recombinant protein was captured through anti-DDK affinity column followed by conventional chromatography steps.
Note:	For testing in cell culture applications, please filter before use. Note that you may experience some loss of protein during the filtration process.
Storage:	Store at -80°C.
Stability:	Stable for 12 months from the date of receipt of the product under proper storage and handling conditions. Avoid repeated freeze-thaw cycles.
RefSeq:	<u>NP_006706</u>
Locus ID:	4123
UniProt ID:	<u>Q9NTJ4</u> , <u>A0A140VJN9</u>
RefSeq Size:	3291
Cytogenetics:	15q24.2
RefSeq ORF:	3120
Synonyms:	MAN6A8; MANA; MANA1
Summary:	Cleaves alpha 1,2-, alpha 1,3-, and alpha 1,6-linked mannose residues from glycoproteins. Involved in the degradation of free oligosaccharides in the cytoplasm.[UniProtKB/Swiss-Prot Function]
Protein Families:	Druggable Genome
Protein Pathways:	Other glycan degradation

Product images:



Coomassie blue staining of purified MAN2C1 protein (Cat# [TP308517]). The protein was produced from HEK293T cells transfected with MAN2C1 cDNA clone (Cat# [RC208517]) using MegaTran 2.0 (Cat# [TT210002]).