

## Product datasheet for **TP308517**

### MAN2C1 (NM\_006715) Human Recombinant Protein

#### Product data:

**Product Type:** Recombinant Proteins  
**Description:** Recombinant protein of human mannosidase, alpha, class 2C, member 1 (MAN2C1), 20 µg  
**Species:** Human  
**Expression Host:** HEK293T  
**Expression cDNA** >RC208517 protein sequence  
**Clone or AA Sequence:** **Red**=Cloning site **Green**=Tags(s)

MAAAPALKHWRTTLERVEKFSPLYFTDCNLRGRILFGASCPVAVLSSFLTPERLPYQEAVQRDFRPAQVG  
DSFGPTWWTCWFRVELTIPEAWVGQEVHLCWESDGEGLVWRDGEVPVQGLTKEGEKTSYVLTDRGGERDPR  
SLTLYVEVACNGLLGAGKGSMAAPDPEKMFQLSRAELAVFHRDVMMLLDLELLGLIAKGLGKDNQRSF  
QALYTANQMVNVCDPAQPETFPVAQALASRFFGQHGGESQHTIHATGHCHIDTAWLWPFKETVRKCARSW  
VTALQLMERNPEFIFACSAQQLLEWVKSRYPLYSRIQEFACRGGQFVPGGTWVEMDGNLPSGEAMVRQF  
LQGQNFLLQEFGKMCSEFWLPDTFGYSAQLPQIMHGCGIRRFLLTQKLSWNLVNSFPHTFFWEGLDGSRV  
LVHFPPGDSYGMQGSVEEVLKTVANNRDKGRANHSALFLFGFDGGGGPTQTMLDRLKRLSNTDGLPRVQL  
SSPRQLFSALESSEQLCTWVGELFLELHNGTYTTHAQIKKGNRECEILHDVELLSLALARSAQFLYP  
AAQLQHLWRLLLLNQFHDVVTGSCIQMVAAEAMCHYEDIRSHGNTLLSAAAAALCAGEPGPEGLLIVNTL  
PWKRIEVMALPKPGGAHSLALVTVPSMGYAPVPPPTSLQPLLQQPVFVWQETDGSVTLDNIGIIRVKLDP  
TGRLTSLVLVASGREIAEGAVGNQFVLFDDVPLYWDAWDVMDYHLETRKPVLGQAGTLAVGTEGGLRGS  
AWFLLQISPNSRLSQEVLDVGCYVRFHTEVHWHEAHKFLKVEFPARVRSSQATYIEIQFGLQRPTHYN  
TSWDWARFEVWAHRWMDLSEHGFLALLNDCKYGASVRSLSLSLLRAPKAPDATADTGRHEFTYALMP  
HKGSFQDAGVIQAAYSLNFLLALPAPSPAPATSWSAFSVSSPAVVLETVKQAESSPQRRSLVRLRYEAH  
GSHVDCWLHLSLPVQEAILCDLLERPDAGHLTLRDNRLKLTFSPFQVLSLLLVLQPPPH

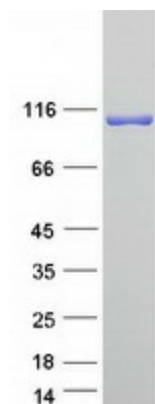
**TRTRPLEQKLISEEDLAANDILDYKDDDDKV**

**Tag:** C-Myc/DDK  
**Predicted MW:** 115.7 kDa  
**Concentration:** >0.05 µg/µL as determined by microplate BCA method  
**Purity:** > 80% as determined by SDS-PAGE and Coomassie blue staining  
**Buffer:** 25 mM Tris-HCl, 100 mM glycine, pH 7.3, 10% glycerol



[View online »](#)

<b>Preparation:</b>	Recombinant protein was captured through anti-DDK affinity column followed by conventional chromatography steps.
<b>Note:</b>	For testing in cell culture applications, please filter before use. Note that you may experience some loss of protein during the filtration process.
<b>Storage:</b>	Store at -80°C.
<b>Stability:</b>	Stable for 12 months from the date of receipt of the product under proper storage and handling conditions. Avoid repeated freeze-thaw cycles.
<b>RefSeq:</b>	<a href="#">NP_006706</a>
<b>Locus ID:</b>	4123
<b>UniProt ID:</b>	<a href="#">Q9NTJ4</a>
<b>RefSeq Size:</b>	3291
<b>Cytogenetics:</b>	15q24.2
<b>RefSeq ORF:</b>	3120
<b>Synonyms:</b>	MAN6A8; MANA; MANA1
<b>Summary:</b>	Cleaves alpha 1,2-, alpha 1,3-, and alpha 1,6-linked mannose residues from glycoproteins. Involved in the degradation of free oligosaccharides in the cytoplasm.[UniProtKB/Swiss-Prot Function]
<b>Protein Families:</b>	Druggable Genome
<b>Protein Pathways:</b>	Other glycan degradation

**Product images:**

Coomassie blue staining of purified MAN2C1 protein (Cat# TP308517). The protein was produced from HEK293T cells transfected with MAN2C1 cDNA clone (Cat# [RC208517]) using MegaTran 2.0 (Cat# [TT210002]).