

Product datasheet for **TP308510**

COMMD2 (NM_016094) Human Recombinant Protein

Product data:

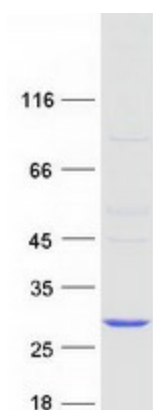
Product Type:	Recombinant Proteins
Description:	Recombinant protein of human COMM domain containing 2 (COMMD2), 20 µg
Species:	Human
Expression Host:	HEK293T
Expression cDNA Clone or AA Sequence:	>RC208510 protein sequence Red =Cloning site Green =Tags(s)
	<p>M L L E L S E E H K E H L A F L P Q V D S A W A E F G R I A V E F L R R G A N P K I Y E G A A R K L N V S S D T V Q H G V E G L T Y L L T E S S K L M I S E L D F Q D S V F V L G F S E E L N K L L L Q L Y L D N R K E I R T L L S E L A P S L P S Y H N L E W R L D V Q L A S R S L R Q Q I K P A V T I K L H L N Q N G D H N T K V L Q T D P A T L L H L V Q Q L E Q A L E E M K T N H C R R V V R N I K</p> <p>T R T R P L E Q K L I S E E D L A A N D I L D Y K D D D D K V</p>
Tag:	C-Myc/DDK
Predicted MW:	22.6 kDa
Concentration:	>0.05 µg/µL as determined by microplate BCA method
Purity:	> 80% as determined by SDS-PAGE and Coomassie blue staining
Buffer:	25 mM Tris-HCl, 100 mM glycine, pH 7.3, 10% glycerol
Preparation:	Recombinant protein was captured through anti-DDK affinity column followed by conventional chromatography steps.
Note:	For testing in cell culture applications, please filter before use. Note that you may experience some loss of protein during the filtration process.
Storage:	Store at -80°C.
Stability:	Stable for 12 months from the date of receipt of the product under proper storage and handling conditions. Avoid repeated freeze-thaw cycles.
RefSeq:	NP_057178
Locus ID:	51122
UniProt ID:	Q86X83
RefSeq Size:	3724



[View online »](#)

Cytogenetics:	3q25.1
RefSeq ORF:	597
Synonyms:	HSPC042
Summary:	May modulate activity of cullin-RING E3 ubiquitin ligase (CRL) complexes (PubMed:21778237). May down-regulate activation of NF-kappa-B (PubMed:15799966).[UniProtKB/Swiss-Prot Function]

Product images:



Coomassie blue staining of purified COMMD2 protein (Cat# TP308510). The protein was produced from HEK293T cells transfected with COMMD2 cDNA clone (Cat# [RC208510]) using MegaTran 2.0 (Cat# [TT210002]).