

## Product datasheet for TP308509M

### SLC14A1 (NM\_015865) Human Recombinant Protein

#### Product data:

Product Type:	Recombinant Proteins
Description:	Recombinant protein of human solute carrier family 14 (urea transporter), member 1 (Kidd blood group) (SLC14A1), transcript variant 2, 100 µg
Species:	Human
Expression Host:	HEK293T
Expression cDNA Clone or AA Sequence:	>RC208509 protein sequence <b>Red</b> =Cloning site <b>Green</b> =Tags(s)

MEDSPTMVRVDSPTMVRGENQVSPCQGRRCFPKALGYVTGDMKELANQLKDKPWVLQFIDWILRGISQV  
FVNNPVSGILILVGLLVQNPWWALTGWLGTVVSTLMALLSQDRSLIASGLYGYNATLVGVLMVAFSDKG  
DYFWWLLLPVCAMSMTCPIFSSALNSVLSKWDLPVFTLPFNMALSMYLSATGHYNPFFPAKLVIPITTAP  
NISWSDLSALELLKSIPVGVGQIYGCDNPWTGGIFLGAILLSSPLMCLHAAIGSLLGIAAGLSLSAPFEN  
IYFGLWGFNSSLACIAMGGMFALTWQTHLLALGCALFTAYLGVGMANFMAEVGLPACTWPFCLATLLFL  
IMTTKNSNIYKMPLSKVTYPEENRIFYLQAKKRMVESPL

**TRTRPLEQKLISEEDLAANDILDYKDDDDKV**

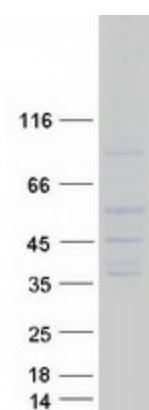
Tag:	C-Myc/DDK
Predicted MW:	42.3 kDa
Concentration:	>0.05 µg/µL as determined by microplate BCA method
Purity:	> 80% as determined by SDS-PAGE and Coomassie blue staining
Buffer:	25 mM Tris-HCl, 100 mM glycine, pH 7.3, 10% glycerol
Preparation:	Recombinant protein was captured through anti-DDK affinity column followed by conventional chromatography steps.
Note:	For testing in cell culture applications, please filter before use. Note that you may experience some loss of protein during the filtration process.
Storage:	Store at -80°C.
Stability:	Stable for 12 months from the date of receipt of the product under proper storage and handling conditions. Avoid repeated freeze-thaw cycles.
RefSeq:	<u><a href="#">NP_056949</a></u>



[View online »](#)

Locus ID:	6563
UniProt ID:	<a href="#">Q13336</a> , <a href="#">G0W2N5</a>
RefSeq Size:	3971
Cytogenetics:	18q12.3
RefSeq ORF:	1167
Synonyms:	HsT1341; HUT11; JK; Jk(b); RACH1; RACH2; UT-B1; UT1; UTE
Summary:	The protein encoded by this gene is a membrane transporter that mediates urea transport in erythrocytes. This gene forms the basis for the Kidd blood group system. [provided by RefSeq, Mar 2009]
Protein Families:	Transmembrane

### Product images:



Coomassie blue staining of purified SLC14A1 protein (Cat# [TP308509]). The protein was produced from HEK293T cells transfected with SLC14A1 cDNA clone (Cat# [RC208509]) using MegaTran 2.0 (Cat# [TT210002]).