

Product datasheet for **TP308502L**

PKC gamma (PRKCG) (NM_002739) Human Recombinant Protein

Product data:

Product Type: Recombinant Proteins

Description: Recombinant protein of human protein kinase C, gamma (PRKCG), 1 mg

Species: Human

Expression Host: HEK293T

Expression cDNA Clone or AA Sequence: >RC208502 protein sequence
Red=Cloning site **Green**=Tags(s)

MAGLPGVGDSEGGPRPLFCRKGALRQKVHEVKSHKFTARFFKQPTFCSHCTDFIWGIGKQGLQCQVCS
FVHRRCHEFVTFECPGAGKGPQTDDPRNKHKFRLHSYSSPTFCDHCGSLLYGLVHQGMKSCCEMNVHR
RCVRSVPSLCGVDHTERRGRLQLEIRAPTADEIHVTVGEARNLIPMDPNGLSDPYVKLKLIPDPRNLTKQ
KTRTVKATLNPVWNETFVFNLPKGDVERRLSVEVWDWDRSRNDFMGAMSGVSELLKAPVDGWYKLLNQ
EEGEYYNVPVADADNCSLLQKFEACNYPLELYERVRMGPSSSPIPSPSPTDPKRCFFGASPGRLHISD
FSFLMVLGKGSFGKVMLAERRGSDELYAIKILKKDVIVQDDVDCTLVEKRVLALGGRGPGGRPHFLTQL
HSTFQTPDRLYFVMEYVTGGDLMIYHIQQLGKFKEPHAAFYAAEIAIGLFFLHNQGIYRDLKLDNVMMLDA
EGHIKITDFGMCKENVFPGTTTTRTFCGTPDYIAPEIIAYQPYGKSVDWWSFGVLLYEMLAGQPPFDGEDE
EELFQAIMEQTVTYPKSLSRVAIAICKGFLTKHPGKRLGSGPDGEPTIRAHGFFRWIDWERLERLEIPPP
FRPRPCGRSGENFDKFFTRAAPALTPDRLVLASIDQADFQGFYVNPDPFVHPDARSPTSPVPVPM

TRTRPLEQKLISEEDLAANDILDYKDDDDKV

Tag: C-Myc/DDK

Predicted MW: 78.3 kDa

Concentration: >0.05 µg/µL as determined by microplate BCA method

Purity: > 80% as determined by SDS-PAGE and Coomassie blue staining

Buffer: 25 mM Tris-HCl, 100 mM glycine, pH 7.3, 10% glycerol

Preparation: Recombinant protein was captured through anti-DDK affinity column followed by conventional chromatography steps.

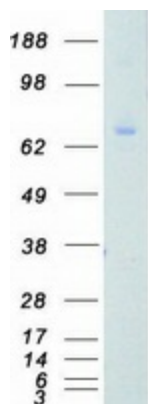
Note: For testing in cell culture applications, please filter before use. Note that you may experience some loss of protein during the filtration process.

Storage: Store at -80°C.



[View online »](#)

Stability:	Stable for 12 months from the date of receipt of the product under proper storage and handling conditions. Avoid repeated freeze-thaw cycles.
RefSeq:	<u>NP_002730</u>
Locus ID:	5582
UniProt ID:	<u>P05129</u>
RefSeq Size:	3143
Cytogenetics:	19q13.42
RefSeq ORF:	2091
Synonyms:	PKC-gamma; PKCC; PKCG; PKCgamma; PKCI(3); SCA14
Summary:	<p>Protein kinase C (PKC) is a family of serine- and threonine-specific protein kinases that can be activated by calcium and second messenger diacylglycerol. PKC family members phosphorylate a wide variety of protein targets and are known to be involved in diverse cellular signaling pathways. PKC also serve as major receptors for phorbol esters, a class of tumor promoters. Each member of the PKC family has a specific expression profile and is believed to play distinct roles in cells. The protein encoded by this gene is one of the PKC family members. This protein kinase is expressed solely in the brain and spinal cord and its localization is restricted to neurons. It has been demonstrated that several neuronal functions, including long term potentiation (LTP) and long term depression (LTD), specifically require this kinase. Knockout studies in mice also suggest that this kinase may be involved in neuropathic pain development. Defects in this protein have been associated with neurodegenerative disorder spinocerebellar ataxia-14 (SCA14). Two transcript variants encoding different isoforms have been found for this gene. [provided by RefSeq, Oct 2015]</p>
Protein Families:	Druggable Genome, Protein Kinase
Protein Pathways:	Calcium signaling pathway, ErbB signaling pathway, Fc gamma R-mediated phagocytosis, Focal adhesion, Gap junction, Glioma, Leukocyte transendothelial migration, Long-term depression, Long-term potentiation, MAPK signaling pathway, Melanogenesis, Natural killer cell mediated cytotoxicity, Non-small cell lung cancer, Pathways in cancer, Phosphatidylinositol signaling system, Tight junction, Vascular smooth muscle contraction, VEGF signaling pathway, Vibrio cholerae infection, Wnt signaling pathway

Product images:

Coomassie blue staining of purified PRKCG protein (Cat# [TP308502]). The protein was produced from HEK293T cells transfected with PRKCG cDNA clone (Cat# [RC208502]) using MegaTran 2.0 (Cat# [TT210002]).