

Product datasheet for **TP308491M**

HE4 (WFDC2) (NM_006103) Human Recombinant Protein

Product data:

| | |
|---------------------------------------|------------------------------------------------------------------------------------------------------------------------------------------------------|
| Product Type: | Recombinant Proteins |
| Description: | Recombinant protein of human WAP four-disulfide core domain 2 (WFDC2), 100 µg |
| Species: | Human |
| Expression Host: | HEK293T |
| Expression cDNA Clone or AA Sequence: | >RC208491 protein sequence Red =Cloning site Green =Tags(s) |
| | MPACRLGPLAAALLLSLLLFGFTLVSGTGAEKTGVCPELQADQNCTQECVSDSECADNLKCCSAGCATFC SLPNDKEGSCPQVNINFPQLGLCRDQCQVDSQCPGQMKCCRNGCGKVSCVTPNF |
| | TRTRPLEQKLISEEDLAANDILDYKDDDDKV |
| Tag: | C-Myc/DDK |
| Predicted MW: | 10 kDa |
| Concentration: | >0.05 µg/µL as determined by microplate BCA method |
| Purity: | > 80% as determined by SDS-PAGE and Coomassie blue staining |
| Buffer: | 25 mM Tris-HCl, 100 mM glycine, pH 7.3, 10% glycerol |
| Preparation: | Recombinant protein was captured through anti-DDK affinity column followed by conventional chromatography steps. |
| Note: | For testing in cell culture applications, please filter before use. Note that you may experience some loss of protein during the filtration process. |
| Storage: | Store at -80°C. |
| Stability: | Stable for 12 months from the date of receipt of the product under proper storage and handling conditions. Avoid repeated freeze-thaw cycles. |
| RefSeq: | NP_006094 |
| Locus ID: | 10406 |
| UniProt ID: | Q14508 , A0A384MTN6 |
| RefSeq Size: | 570 |
| Cytogenetics: | 20q13.12 |



[View online »](#)

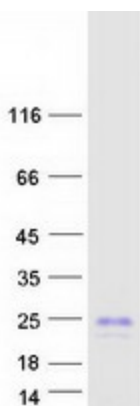
RefSeq ORF: 372

Synonyms: dj461P17.6; EDDM4; HE4; WAP5

Summary: This gene encodes a protein that is a member of the WFDC domain family. The WFDC domain, or WAP Signature motif, contains eight cysteines forming four disulfide bonds at the core of the protein, and functions as a protease inhibitor in many family members. This gene is expressed in pulmonary epithelial cells, and was also found to be expressed in some ovarian cancers. The encoded protein is a small secretory protein, which may be involved in sperm maturation. [provided by RefSeq, Jul 2008]

Protein Families: Secreted Protein, Transmembrane

Product images:



Coomassie blue staining of purified WFDC2 protein (Cat# [TP308491]). The protein was produced from HEK293T cells transfected with WFDC2 cDNA clone (Cat# [RC208491]) using MegaTran 2.0 (Cat# [TT210002]).