

Product datasheet for **TP308491L**

HE4 (WFDC2) (NM_006103) Human Recombinant Protein

Product data:

Product Type:	Recombinant Proteins
Description:	Recombinant protein of human WAP four-disulfide core domain 2 (WFDC2), 1 mg
Species:	Human
Expression Host:	HEK293T
Expression cDNA Clone or AA Sequence:	>RC208491 protein sequence Red =Cloning site Green =Tags(s)
	MPACRLGPLAAALLLSLLLFGFTLVSGTGAEKTGVCPELQADQNCTQECVSDSECADNLKCCSAGCATFC SLPNDKEGSCPQVNINFPQLGLCRDQCQVDSQCPGQMKCCRNGCGKVSCVTPNF
	TRTRPLEQKLISEEDLAANDILDYKDDDDKV
Tag:	C-Myc/DDK
Predicted MW:	10 kDa
Concentration:	>0.05 µg/µL as determined by microplate BCA method
Purity:	> 80% as determined by SDS-PAGE and Coomassie blue staining
Buffer:	25 mM Tris-HCl, 100 mM glycine, pH 7.3, 10% glycerol
Preparation:	Recombinant protein was captured through anti-DDK affinity column followed by conventional chromatography steps.
Note:	For testing in cell culture applications, please filter before use. Note that you may experience some loss of protein during the filtration process.
Storage:	Store at -80°C.
Stability:	Stable for 12 months from the date of receipt of the product under proper storage and handling conditions. Avoid repeated freeze-thaw cycles.
RefSeq:	NP_006094
Locus ID:	10406
UniProt ID:	Q14508 , A0A384MTN6
RefSeq Size:	570
Cytogenetics:	20q13.12



[View online »](#)

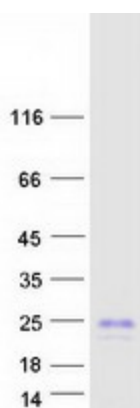
RefSeq ORF: 372

Synonyms: dj461P17.6; EDDM4; HE4; WAP5

Summary: This gene encodes a protein that is a member of the WFDC domain family. The WFDC domain, or WAP Signature motif, contains eight cysteines forming four disulfide bonds at the core of the protein, and functions as a protease inhibitor in many family members. This gene is expressed in pulmonary epithelial cells, and was also found to be expressed in some ovarian cancers. The encoded protein is a small secretory protein, which may be involved in sperm maturation. [provided by RefSeq, Jul 2008]

Protein Families: Secreted Protein, Transmembrane

Product images:



Coomassie blue staining of purified WFDC2 protein (Cat# [TP308491]). The protein was produced from HEK293T cells transfected with WFDC2 cDNA clone (Cat# [RC208491]) using MegaTran 2.0 (Cat# [TT210002]).