

Product datasheet for **TP308457M**

LSM12 (NM_152344) Human Recombinant Protein

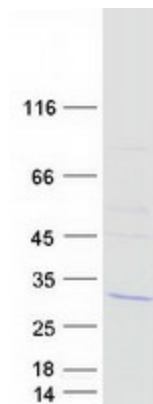
Product data:

Product Type:	Recombinant Proteins
Description:	Recombinant protein of human LSM12 homolog (<i>S. cerevisiae</i>) (LSM12), 100 µg
Species:	Human
Expression Host:	HEK293T
Expression cDNA Clone or AA Sequence:	>RC208457 protein sequence Red =Cloning site Green =Tags(s)
	MAAPPGEYFSVGSQVSCRTCQEQLQGEVWAFDYQSKMLALKCPSSSGKPNHADILLINLQYVSEVEIIN DRTETPRPLASLNVS KLASKARTEKEEKLSQAYAISAGVSLEGQQLFQTIHKTIKDCKWQEKNIIVMEEV VITPPYQVENCKGKEGSALSHVRKIVEKHFRDVESQKILQRSQAQQPQKEAALSS
	TRTRPLEQKLISEEDLAANDILDYKDDDDKV
Tag:	C-Myc/DDK
Predicted MW:	21.5 kDa
Concentration:	>0.05 µg/µL as determined by microplate BCA method
Purity:	> 80% as determined by SDS-PAGE and Coomassie blue staining
Buffer:	25 mM Tris-HCl, 100 mM glycine, pH 7.3, 10% glycerol
Preparation:	Recombinant protein was captured through anti-DDK affinity column followed by conventional chromatography steps.
Note:	For testing in cell culture applications, please filter before use. Note that you may experience some loss of protein during the filtration process.
Storage:	Store at -80°C.
Stability:	Stable for 12 months from the date of receipt of the product under proper storage and handling conditions. Avoid repeated freeze-thaw cycles.
RefSeq:	NP_689557
Locus ID:	124801
UniProt ID:	Q3MHD2
RefSeq Size:	2507



[View online »](#)

Cytogenetics: 17q21.31
RefSeq ORF: 585
Synonyms: PNAS-135

Product images:

Coomassie blue staining of purified LSM12 protein (Cat# [TP308457]). The protein was produced from HEK293T cells transfected with LSM12 cDNA clone (Cat# [RC208457]) using MegaTran 2.0 (Cat# [TT210002]).