

## Product datasheet for **TP308457**

### LSM12 (NM\_152344) Human Recombinant Protein

#### Product data:

**Product Type:** Recombinant Proteins

**Description:** Recombinant protein of human LSM12 homolog (*S. cerevisiae*) (LSM12), 20 µg

**Species:** Human

**Expression Host:** HEK293T

**Expression cDNA Clone  
or AA Sequence:** >RC208457 protein sequence  
**Red**=Cloning site **Green**=Tags(s)

MAAPPGEYFSVGSQVSCRTCQEQLQGEVWAFDYQSKMLALKCPSSSGKPNHADILLINLQYVSEVEIIN  
DRTETPRPLASLNVS KLASKARTEKEEKLSQAYAISAGVSLEGQQLFQTIHKTIKDCKWQEKNIIVMEEV  
VITPPYQVENCKGKEGSALSHVRKIVEKHFRDVESQKILQRSQAQQPQKEAALSS

**TRTRPLEQKLISEEDLAANDILDYKDDDDKV**

**Tag:** C-Myc/DDK

**Predicted MW:** 21.5 kDa

**Concentration:** >0.05 µg/µL as determined by microplate BCA method

**Purity:** > 80% as determined by SDS-PAGE and Coomassie blue staining

**Buffer:** 25 mM Tris-HCl, 100 mM glycine, pH 7.3, 10% glycerol

**Preparation:** Recombinant protein was captured through anti-DDK affinity column followed by conventional chromatography steps.

**Note:** For testing in cell culture applications, please filter before use. Note that you may experience some loss of protein during the filtration process.

**Storage:** Store at -80°C.

**Stability:** Stable for 12 months from the date of receipt of the product under proper storage and handling conditions. Avoid repeated freeze-thaw cycles.

**RefSeq:** [NP\\_689557](#)

**Locus ID:** 124801

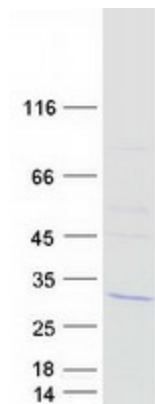
**UniProt ID:** [Q3MHD2](#)

**RefSeq Size:** 2507



[View online »](#)

Cytogenetics: 17q21.31  
RefSeq ORF: 585  
Synonyms: PNAS-135

**Product images:**

Coomassie blue staining of purified LSM12 protein (Cat# TP308457). The protein was produced from HEK293T cells transfected with LSM12 cDNA clone (Cat# [RC208457]) using MegaTran 2.0 (Cat# [TT210002]).