

Product datasheet for TP308436

SEC63 (NM_007214) Human Recombinant Protein

Product data:

Product Type:	Recombinant Proteins
Description:	Recombinant protein of human SEC63 homolog (<i>S. cerevisiae</i>) (SEC63), 20 µg
Species:	Human
Expression Host:	HEK293T
Expression cDNA Clone or AA Sequence:	>RC208436 protein sequence Red=Cloning site Green=Tags(s)
	<p>MAGQQFQYDDSGNTFFYFLTSFVGLVIVPATYYLWPRDQNAEQIRLKNIRKVYGRMWRLLKPKQPNIIPTVKKIVLLAGWALFLFLAYKVKTDREYQEYNPYEVLNLDPGATVAEIKKQYRLLSLKYHPDKGGDEV MFMRIAKAYAALTDDESRKNWEEFGNPDGPQATSFGIALPAWIVDQKNSILVLLVYGLAFMVLVWVGS WWYRSIRYSGDQILIRTTQIYTYFVKTRNMDMKRLIMVLAGASEFDPQYNKDATS RPTDNILIPQLIRE IGSINLKKNEPPLTCPYSLKARVLLLSHLARMKIPETLEEDQQFMLKKCPALLQEMVNVICQLIVMARNR EEREFRAPTLASLENCMKLSQMAVQGLQQFKSPLLQLPHIEEDNLRVSNHKKYKIKTIQDLVSLKESDR HTLLHFLEDEKYEVMVAVLGSFPYVTMDIKSQVLDDSDSNNITVGLSVTLVVKLTRQTMAEVFEKEQSIC AAEQPAEDGQGETNKNRKTGGWQQKSKGPKKTA SKKKKPLKKKPTVLLPQSKQQKQKQANGVVGNEA AVKEDDEEVSDKGSDEEEETNRDSQSEKDDGSDRSDREQDEKQNKDDEAEWQELQQSIQRKERALLET KSKITHPVYSLYFPEEKQEWWWLYADRKEQTLISMPYHVCTLKDTEEVELKFPAPGKPGNYQYTVFLRS DSYMGLDQIKPLKLEVHEAKVPENHPQWDTAIEGDEDQEDSEGFEDSFEEEEEEEEEDDD</p> <p>TRTRPLEQKLISEEDLAANDILDYKDDDDKV</p>
Tag:	C-Myc/DDK
Predicted MW:	87.8 kDa
Concentration:	>0.05 µg/µL as determined by microplate BCA method
Purity:	> 80% as determined by SDS-PAGE and Coomassie blue staining
Buffer:	25 mM Tris-HCl, 100 mM glycine, pH 7.3, 10% glycerol
Preparation:	Recombinant protein was captured through anti-DDK affinity column followed by conventional chromatography steps.
Note:	For testing in cell culture applications, please filter before use. Note that you may experience some loss of protein during the filtration process.
Storage:	Store at -80°C.



[View online »](#)

Stability: Stable for 12 months from the date of receipt of the product under proper storage and handling conditions. Avoid repeated freeze-thaw cycles.

RefSeq: [NP_009145](#)

Locus ID: 11231

UniProt ID: [Q9UGP8](#), [A0A0S2Z5M1](#)

RefSeq Size: 6500

Cytogenetics: 6q21

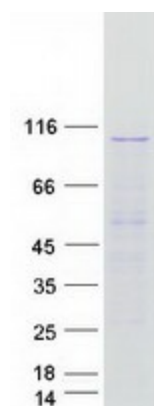
RefSeq ORF: 2280

Synonyms: DNAJC23; ERdj2; PCLD2; PRO2507; SEC63L

Summary: The Sec61 complex is the central component of the protein translocation apparatus of the endoplasmic reticulum (ER) membrane. The protein encoded by this gene and SEC62 protein are found to be associated with ribosome-free SEC61 complex. It is speculated that Sec61-Sec62-Sec63 may perform post-translational protein translocation into the ER. The Sec61-Sec62-Sec63 complex might also perform the backward transport of ER proteins that are subject to the ubiquitin-proteasome-dependent degradation pathway. The encoded protein is an integral membrane protein located in the rough ER. [provided by RefSeq, Jul 2008]

Protein Families: Transmembrane

Product images:



Coomassie blue staining of purified SEC63 protein (Cat# TP308436). The protein was produced from HEK293T cells transfected with SEC63 cDNA clone (Cat# [RC208436]) using MegaTran 2.0 (Cat# [TT210002]).