

Product datasheet for **TP308432M**

YES1 (NM_005433) Human Recombinant Protein

Product data:

Product Type:	Recombinant Proteins
Description:	Recombinant protein of human v-yes-1 Yamaguchi sarcoma viral oncogene homolog 1 (YES1), 100 µg
Species:	Human
Expression Host:	HEK293T
Expression cDNA Clone or AA Sequence:	>RC208432 protein sequence Red =Cloning site Green =Tags(s)

MGCIKSKENKSPAIKYRPENTPEPVSTSVSHYGAEP TTVSPCPSSSAKGTAVNFSSLSMTPFGGSSGVTP
FGGASSFSVVPSSYPAGLTGGVTIFVALYDYEARTTEDLSFKKGERFQIINTEGDWWEARSATGKNG
YIPSNYVAPADSIQAEWYFGKMGRKDAERLLL NPGNQRGIFLVRESETTKGAYSLSIRDWDEIRGDNVK
HYKIRKLDNGGYITTRAQFDLQKLVKHYTEHADGLCHKLTTVCPTVKPQTQGLAKDAWEIPRESLRLE
VKLGQGCFCGEVWMGTWNGTTKVAIKTLKPGTMMPEAFLQEAQIMKKLRHDKLVPLYAVVSEEPYIVTEF
MSKGSLLDFLKEGDGKYLKLPQLVDMAAQIADGMAYIERMNYIHRDLRAANILVGENLVCKIADFGLARL
IEDNEYTARQGAKFPIKWTAPEAALYGRFTIKSDVWSFGILQTELVTKGRVPYPGMVNREVLQVERGYR
MPCPQGCPESLHELMNLCWKKDPDERPTFEYIQSFLEDYFTATEPQYQPGENL

TRTRPLEQKLISEEDLAANDILDYKDDDDKV

Tag:	C-Myc/DDK
Predicted MW:	60.6 kDa
Concentration:	>0.05 µg/µL as determined by microplate BCA method
Purity:	> 80% as determined by SDS-PAGE and Coomassie blue staining
Buffer:	25 mM Tris-HCl, 100 mM glycine, pH 7.3, 10% glycerol
Preparation:	Recombinant protein was captured through anti-DDK affinity column followed by conventional chromatography steps.
Note:	For testing in cell culture applications, please filter before use. Note that you may experience some loss of protein during the filtration process.
Storage:	Store at -80°C.



[View online »](#)

Stability: Stable for 12 months from the date of receipt of the product under proper storage and handling conditions. Avoid repeated freeze-thaw cycles.

RefSeq: [NP_005424](#)

Locus ID: 7525

UniProt ID: [P07947](#)

RefSeq Size: 4685

Cytogenetics: 18p11.32

RefSeq ORF: 1629

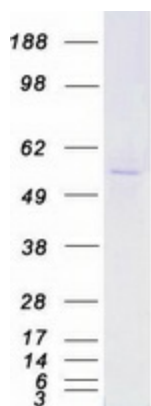
Synonyms: c-yes; HsT441; P61-YES; Yes

Summary: This gene is the cellular homolog of the Yamaguchi sarcoma virus oncogene. The encoded protein has tyrosine kinase activity and belongs to the src family of proteins. This gene lies in close proximity to thymidylate synthase gene on chromosome 18, and a corresponding pseudogene has been found on chromosome 22. [provided by RefSeq, Jul 2008]

Protein Families: Druggable Genome, Protein Kinase

Protein Pathways: Adherens junction, Tight junction

Product images:



Coomassie blue staining of purified YES1 protein (Cat# [TP308432]). The protein was produced from HEK293T cells transfected with YES1 cDNA clone (Cat# [RC208432]) using MegaTran 2.0 (Cat# [TT210002]).