

## Product datasheet for **TP308432L**

### **YES1 (NM\_005433) Human Recombinant Protein**

#### **Product data:**

|  |  |
|--|--|
| <b>Product Type:</b>                         | Recombinant Proteins   |
| <b>Description:</b>                          | Recombinant protein of human v-yes-1 Yamaguchi sarcoma viral oncogene homolog 1 (YES1), 1 mg |
| <b>Species:</b>                              | Human  |
| <b>Expression Host:</b>                      | HEK293T  |
| <b>Expression cDNA Clone or AA Sequence:</b> | >RC208432 protein sequence<br><b>Red</b> =Cloning site <b>Green</b> =Tags(s)                 |

MGCIKSKENKSPAIKYRPENTPEPVSTSVSHYGAEPPTVSPCPSSSAKGTAVNFSSLSMTPFGGSSGVTP  
FGGASSFSVVPSSYPAGLTGGVTIFVALYDYEARTTEDLSFKKGERFQIINTEGDWWEARSATGKNG  
YIPSNYVAPADSIQAEWYFGKMGRKDAERLLLNPGNQRGIFLVRESEETTKGAYSLSIRDWDEIRGDNVK  
HYKIRKLDNGGYITTRAQFDTLQKLVKHYTEHADGLCHKLTTVCPTVKPQTQGLAKDAWEIPRESLRLE  
VKLGQGCFCGEVWMGTWNGTTKVAIKTLKPGTMMPEAFLQEAQIMKKLRHDKLVPLYAVVSEEPYIVTEF  
MSKGSLLDFLKEGDGKYLKLPQLVDMAAQIADGMAYIERMNYIHRDLRAANILVGENLVCKIADFGLARL  
IEDNEYTARQGAKFPIKWTAPEAALYGRFTIKSDVWSFGILQTELVTKGRVPYPGMVNREVLQVERGYR  
MPCPQGCPESLHELMNLCWKKDPDERPTFEYIQSFLEDYFTATEPQYQPGENL

**TRTRPLEQKLISEEDLAANDILDYKDDDDKV**

|                       |  |
|-----------------------|--|
| <b>Tag:</b>           | C-Myc/DDK  |
| <b>Predicted MW:</b>  | 60.6 kDa   |
| <b>Concentration:</b> | >0.05 µg/µL as determined by microplate BCA method   |
| <b>Purity:</b>        | > 80% as determined by SDS-PAGE and Coomassie blue staining  |
| <b>Buffer:</b>        | 25 mM Tris-HCl, 100 mM glycine, pH 7.3, 10% glycerol   |
| <b>Preparation:</b>   | Recombinant protein was captured through anti-DDK affinity column followed by conventional chromatography steps.                                     |
| <b>Note:</b>          | For testing in cell culture applications, please filter before use. Note that you may experience some loss of protein during the filtration process. |
| <b>Storage:</b>       | Store at -80°C.  |



[View online »](#)

**Stability:** Stable for 12 months from the date of receipt of the product under proper storage and handling conditions. Avoid repeated freeze-thaw cycles.

**RefSeq:** [NP\\_005424](#)

**Locus ID:** 7525

**UniProt ID:** [P07947](#)

**RefSeq Size:** 4685

**Cytogenetics:** 18p11.32

**RefSeq ORF:** 1629

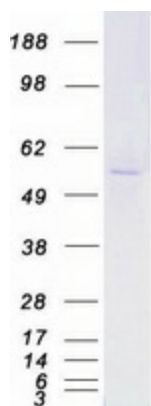
**Synonyms:** c-yes; HsT441; P61-YES; Yes

**Summary:** This gene is the cellular homolog of the Yamaguchi sarcoma virus oncogene. The encoded protein has tyrosine kinase activity and belongs to the src family of proteins. This gene lies in close proximity to thymidylate synthase gene on chromosome 18, and a corresponding pseudogene has been found on chromosome 22. [provided by RefSeq, Jul 2008]

**Protein Families:** Druggable Genome, Protein Kinase

**Protein Pathways:** Adherens junction, Tight junction

### Product images:



Coomassie blue staining of purified YES1 protein (Cat# [TP308432]). The protein was produced from HEK293T cells transfected with YES1 cDNA clone (Cat# [RC208432]) using MegaTran 2.0 (Cat# [TT210002]).