

## Product datasheet for **TP308422L**

### LRRC28 (NM\_144598) Human Recombinant Protein

#### Product data:

**Product Type:** Recombinant Proteins

**Description:** Recombinant protein of human leucine rich repeat containing 28 (LRRC28), 1 mg

**Species:** Human

**Expression Host:** HEK293T

**Expression cDNA Clone or AA Sequence:** >RC208422 protein sequence  
**Red**=Cloning site **Green**=Tags(s)

MASELCKTISVARLEKHKNLFLNYRNLHHPLELLKDEGLQYLERLYMKRNSLTSLPENLAQKLPNLVEL  
YLHSNNIVVPEAIGSLVKLQCLDLSDNALEIVCPEIGRLRALRHLRLANNQLQFLPPEVGDLELQTLTLD  
ISTNRLLTLPERLHMCLSLQYLTVDNRNLWYVPRHLCQLPSLNELSMAGNRLAFLPLDLGRSRELQYVYV  
DNNIHLKGLPSYLYNKVIGCSGCGAPIQVSEVKLLSFSSGQRTVFLPAEVKAIGTEHDHVLPLQELAMRG  
LYHTYHSLKDLNFLSPISLPRSLLELLHCP LGHCHRCSEPMFTIVYPKLFPLRETPMAGLHQWKTTSVF  
VAYCCSTQCLQTFDLLS

**TR**TRPLEQKLISEEDLAANDILDYKDDDDKV

**Tag:** C-Myc/DDK

**Predicted MW:** 41.7 kDa

**Concentration:** >0.05 µg/µL as determined by microplate BCA method

**Purity:** > 80% as determined by SDS-PAGE and Coomassie blue staining

**Buffer:** 25 mM Tris-HCl, 100 mM glycine, pH 7.3, 10% glycerol

**Preparation:** Recombinant protein was captured through anti-DDK affinity column followed by conventional chromatography steps.

**Note:** For testing in cell culture applications, please filter before use. Note that you may experience some loss of protein during the filtration process.

**Storage:** Store at -80°C.

**Stability:** Stable for 12 months from the date of receipt of the product under proper storage and handling conditions. Avoid repeated freeze-thaw cycles.

**RefSeq:** [NP\\_653199](#)

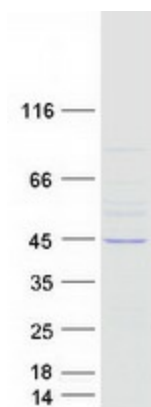
**Locus ID:** 123355



[View online »](#)

UniProt ID: [Q86X40](#)  
RefSeq Size: 1569  
Cytogenetics: 15q26.3  
RefSeq ORF: 1101

### Product images:



Coomassie blue staining of purified LRRC28 protein (Cat# [TP308422]). The protein was produced from HEK293T cells transfected with LRRC28 cDNA clone (Cat# [RC208422]) using MegaTran 2.0 (Cat# [TT210002]).