

Product datasheet for TP308422

LRRC28 (NM_144598) Human Recombinant Protein

Product data:

Product Type:	Recombinant Proteins
Description:	Recombinant protein of human leucine rich repeat containing 28 (LRRC28), 20 µg
Species:	Human
Expression Host:	HEK293T
Expression cDNA Clone or AA Sequence:	>RC208422 protein sequence Red =Cloning site Green =Tags(s)

MASELCKTISVARLEKHKNLFLNYRNLHHFPLELLKDEGLQYLERLYMKRNSLTSLPENLAQKLPNLVEL
YLHSNNIVVPEAIGSLVKLQCLDLSDNALEIVCPEIGRLRALRHLRLANNQLQFLPPEVGDLELQTLTLD
ISTNRLLTLPERLHMCLSLQYLTVDNRNLWYVPRHLCQLPSLNELSMAGNRLAFLPLDLGRSRELQYVYV
DNNIHLKGLPSYLYNKVIGCSGCGAPIQVSEVKLLSFSSGQRTVFLPAEVKAIGTEHDHVLPLQELAMRG
LYHTYHSLKDLNFLSPISLPRSLLELLHCP LGHCHRCSEPMFTIVYPKLFPLRETPMAGLHQWKTTSV
VAYCCSTQCLQTFDLLS

TRTRPLEQKLISEEDLAANDILDYKDDDDKV

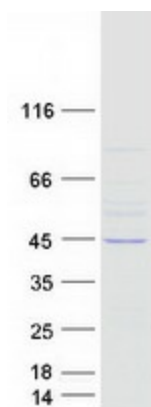
Tag:	C-Myc/DDK
Predicted MW:	41.7 kDa
Concentration:	>0.05 µg/µL as determined by microplate BCA method
Purity:	> 80% as determined by SDS-PAGE and Coomassie blue staining
Buffer:	25 mM Tris-HCl, 100 mM glycine, pH 7.3, 10% glycerol
Preparation:	Recombinant protein was captured through anti-DDK affinity column followed by conventional chromatography steps.
Note:	For testing in cell culture applications, please filter before use. Note that you may experience some loss of protein during the filtration process.
Storage:	Store at -80°C.
Stability:	Stable for 12 months from the date of receipt of the product under proper storage and handling conditions. Avoid repeated freeze-thaw cycles.
RefSeq:	NP_653199
Locus ID:	123355



[View online »](#)

UniProt ID: [Q86X40](#)
RefSeq Size: 1569
Cytogenetics: 15q26.3
RefSeq ORF: 1101

Product images:



Coomassie blue staining of purified LRRC28 protein (Cat# TP308422). The protein was produced from HEK293T cells transfected with LRRC28 cDNA clone (Cat# [RC208422]) using MegaTran 2.0 (Cat# [TT210002]).