

Product datasheet for **TP308410L**

EMP1 (NM_001423) Human Recombinant Protein

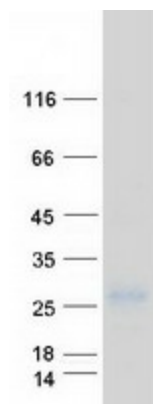
Product data:

Product Type:	Recombinant Proteins
Description:	Recombinant protein of human epithelial membrane protein 1 (EMP1), 1 mg
Species:	Human
Expression Host:	HEK293T
Expression cDNA Clone or AA Sequence:	>RC208410 protein sequence Red =Cloning site Green =Tags(s)
	 MLVLLAGIFVWHIATVIMLFVSTIANVWLVSNTVDASVGLWKNCTNISCSDSLSEYASEDALKTVQAFMIL SIIFCVIALLVVFVQLFTMEKGNRFFLSGATTLVCWLCILVGVSITYSHYANRDGTQYHHGYSYILGWIC FCFSFIIGVLYLVLRKK TRTRPLEQKLISEEDLAANDILDYKDDDDKV
Tag:	C-Myc/DDK
Predicted MW:	17.4 kDa
Concentration:	>0.05 µg/µL as determined by microplate BCA method
Purity:	> 80% as determined by SDS-PAGE and Coomassie blue staining
Buffer:	25 mM Tris-HCl, 100 mM glycine, pH 7.3, 10% glycerol
Preparation:	Recombinant protein was captured through anti-DDK affinity column followed by conventional chromatography steps.
Note:	For testing in cell culture applications, please filter before use. Note that you may experience some loss of protein during the filtration process.
Storage:	Store at -80°C.
Stability:	Stable for 12 months from the date of receipt of the product under proper storage and handling conditions. Avoid repeated freeze-thaw cycles.
RefSeq:	NP_001414
Locus ID:	2012
UniProt ID:	P54849 , A0A024RAT0
RefSeq Size:	2804



[View online »](#)

Cytogenetics: 12p13.1
RefSeq ORF: 471
Synonyms: CL-20; EMP-1; TMP
Protein Families: Transmembrane

Product images:

Coomassie blue staining of purified EMP1 protein (Cat# [TP308410]). The protein was produced from HEK293T cells transfected with EMP1 cDNA clone (Cat# [RC208410]) using MegaTran 2.0 (Cat# [TT210002]).