

## Product datasheet for **TP308400**

### CD239 (BCAM) (NM\_005581) Human Recombinant Protein

#### Product data:

Product Type:	Recombinant Proteins
Description:	Recombinant protein of human basal cell adhesion molecule (Lutheran blood group) (BCAM), transcript variant 1, 20 µg
Species:	Human
Expression Host:	HEK293T
Expression cDNA Clone or AA Sequence:	>RC208400 protein sequence <b>Red</b> =Cloning site <b>Green</b> =Tags(s)

MEPPDAPAQARGAPRLLLLAVLLAAHPDAQAEVRLSVPPLVEVMRGKSVILDCTPTGTHDHYMLEWFLTD  
RSGARPLASAEMQGSELQVTMHDTRGRSPPYQLDSQGRVLAEAQVGDERDYVCVWRAGAAGTAEATAR  
LNVFAKPEATEVSPNKGTL SVMEDSAQEIATCNSRNGNPAPKITWYRNGQRLEVPVEMNPEGYMTSRTVR  
EASGLLSLTSTLYLRLRKDDRDASFHCAAHYSLPEGRHGRLDSPTFHLTLHYPTHEHVQFWVGGSPSTPAGW  
VREGDTVQLLCRGDGGSPSEYTLFRLQDEQEEVLNVNLEGNLTLEGVTRGQSGTYGCRVEDYDAADDVQL  
SKTLELRVAYLDPLELSEGKVL SPLNSSAVVNCVHGLPTPALRWTKDSTPLGDGPMLSLSITFDSNG  
TYVCEASLPTVPVLSRTQNFTLLVQGSPELKTAEIEPKADGWSWREGDEVTLICSARGHPDPKLSWSQLGG  
SPAEPPIGRQGWVSSSLTKVTSALS RDGISCEASNPHGNKRHVHFGTVSPQTSQAGVAVMAVAVSVGL  
LLLWVAVFYCVRRKGGPCCRQRREKGAPPPGEPGLSHSGSEQPEQTGLLMGGASGGARGGSGGFGDEC

**TRTRPLEQKLISEEDLAANDILDYKDDDDKV**

Tag:	C-Myc/DDK
Predicted MW:	64.2 kDa
Concentration:	>0.05 µg/µL as determined by microplate BCA method
Purity:	> 80% as determined by SDS-PAGE and Coomassie blue staining
Buffer:	25 mM Tris-HCl, 100 mM glycine, pH 7.3, 10% glycerol
Preparation:	Recombinant protein was captured through anti-DDK affinity column followed by conventional chromatography steps.
Note:	For testing in cell culture applications, please filter before use. Note that you may experience some loss of protein during the filtration process.
Storage:	Store at -80°C.



[View online »](#)

**Stability:** Stable for 12 months from the date of receipt of the product under proper storage and handling conditions. Avoid repeated freeze-thaw cycles.

**RefSeq:** [NP\\_005572](#)

**Locus ID:** 4059

**UniProt ID:** [P50895](#)

**RefSeq Size:** 2470

**Cytogenetics:** 19q13.32

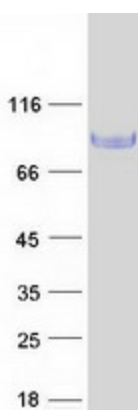
**RefSeq ORF:** 1884

**Synonyms:** AU; CD239; LU; MSK19

**Summary:** This gene encodes Lutheran blood group glycoprotein, a member of the immunoglobulin superfamily and a receptor for the extracellular matrix protein, laminin. The protein contains five extracellular immunoglobulin domains, a single transmembrane domain, and a short C-terminal cytoplasmic tail. This protein may play a role in epithelial cell cancer and in vaso-occlusion of red blood cells in sickle cell disease. Polymorphisms in this gene define some of the antigens in the Lutheran system and also the Auberger system. Inactivating variants of this gene result in the recessive Lutheran null phenotype, Lu(a-b-), of the Lutheran blood group. Two transcript variants encoding different isoforms have been found for this gene. [provided by RefSeq, May 2012]

**Protein Families:** Druggable Genome, Transmembrane

### Product images:



Coomassie blue staining of purified BCAM protein (Cat# TP308400). The protein was produced from HEK293T cells transfected with BCAM cDNA clone (Cat# [RC208400]) using MegaTran 2.0 (Cat# [TT210002]).