

Product datasheet for TP308399L

APOBEC2 (NM_006789) Human Recombinant Protein

Product data:

Product Type:	Recombinant Proteins
Description:	Recombinant protein of human apolipoprotein B mRNA editing enzyme, catalytic polypeptide-like 2 (APOBEC2), 1 mg
Species:	Human
Expression Host:	HEK293T
Expression cDNA Clone or AA Sequence:	>RC208399 representing NM_006789 Red =Cloning site Green =Tags(s)
	<p>MAQKEEA AVATEAASQNGEDLENLDDPEK LKELIELPPFEIVTGERLPANFFKFQFRNVEYSSGRNKTFL CYVVEAQGGQVQASRGYLEDEHAAAHAEEAFFNTILPAFDPALRYNVTWYVSSSPCAACADRIIKTLS KTKNLRLLILVGRLFMWEEPEIQAALKKLKEAGCKLRIMKPQDFEYVWQNFVEQEEGESKAFQPWEDIQE NFLYYEEKLADILK</p> <p>TRTRPLEQKLISEEDLAANDILDYKDDDDKV</p>
Tag:	C-Myc/DDK
Predicted MW:	25.5 kDa
Concentration:	>0.05 µg/µL as determined by microplate BCA method
Purity:	> 80% as determined by SDS-PAGE and Coomassie blue staining
Buffer:	25 mM Tris-HCl, 100 mM glycine, pH 7.3, 10% glycerol
Preparation:	Recombinant protein was captured through anti-DDK affinity column followed by conventional chromatography steps.
Note:	For testing in cell culture applications, please filter before use. Note that you may experience some loss of protein during the filtration process.
Storage:	Store at -80°C.
Stability:	Stable for 12 months from the date of receipt of the product under proper storage and handling conditions. Avoid repeated freeze-thaw cycles.
RefSeq:	<u>NP_006780</u>
Locus ID:	10930



[View online »](#)

UniProt ID: [Q9Y235](#)

RefSeq Size: 1195

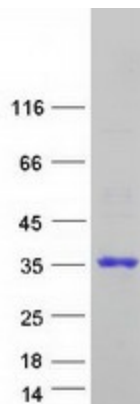
Cytogenetics: 6p21.1

RefSeq ORF: 672

Synonyms: ARCD1; ARP1

Summary: Probable C to U editing enzyme whose physiological substrate is not yet known. Does not display detectable apoB mRNA editing. Has a low intrinsic cytidine deaminase activity. May play a role in the epigenetic regulation of gene expression through the process of active DNA demethylation.[UniProtKB/Swiss-Prot Function]

Product images:



Coomassie blue staining of purified APOBEC2 protein (Cat# [TP308399]). The protein was produced from HEK293T cells transfected with APOBEC2 cDNA clone (Cat# [RC208399]) using MegaTran 2.0 (Cat# [TT210002]).