

## Product datasheet for **TP308397**

### AMH (NM\_000479) Human Recombinant Protein

#### Product data:

Product Type:	Recombinant Proteins
Description:	Recombinant protein of human anti-Mullerian hormone (AMH), 20 µg
Species:	Human
Expression Host:	HEK293T
Expression cDNA Clone or AA Sequence:	>RC208397 representing NM_000479 Red=Cloning site Green=Tags(s)

MRDLPLTSLALVLSALGALLGTEALRAEEPVGTSGLIFREDLDWPPGSPQEPLCLVALGGDSNGSSSPL  
RVGALSAYEQAFLGAVQRRARWGPRDLATFGVCNTGDRQAALPSLRRLGAWLRDPGGQRLVLHLEEVW  
EPTSLRFQEPGGAGPPELALLVLYPGPGPEVTVTRAGLPGAQSLCPSRDTRYLVLAVDRPAGAWRGS  
GLALTLQPRGEDSRLSTARLQALLFGDDHRCFTRMTPALLLLPRSEAPLPAHGQLDTPFPPPRPSAEL  
EESPPSADPFLETLTRLVLRALRVPPARASAPRLALDPDALAGFPQGLVNLSDPAALERLLDGEEPLLLL  
RPTAATTGDPAPLHDPTSAPWATALARRVAAELQAAAAELRSLPGLPPATAPLLARLLALCPGGPGGLGD  
PLRALLLQGLRVEWRGRDPRGPGRAQRSAGATAADGPCALRELSVDLRAERSVLIPETYQANNCQG  
VCGWPQSDRNPRYGNHVLLKMQARGAALARPPCCVPTAYAGKLLISLSEERISAHVPMNVATECGCR

TRTRPLEQKLISEEDLAANDILDYKDDDDKV

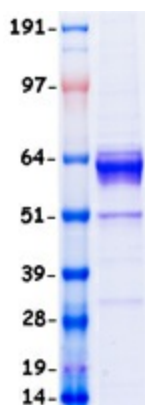
Tag:	C-Myc/DDK
Predicted MW:	56.6 kDa
Concentration:	>0.05 µg/µL as determined by microplate BCA method
Purity:	> 80% as determined by SDS-PAGE and Coomassie blue staining
Buffer:	25 mM Tris-HCl, 100 mM glycine, pH 7.3, 10% glycerol
Bioactivity:	In vivo treatment (PMID: <a href="#">29760445</a> )
Preparation:	Recombinant protein was captured through anti-DDK affinity column followed by conventional chromatography steps.
Note:	For testing in cell culture applications, please filter before use. Note that you may experience some loss of protein during the filtration process.
Storage:	Store at -80°C.



[View online »](#)

<b>Stability:</b>	Stable for 12 months from the date of receipt of the product under proper storage and handling conditions. Avoid repeated freeze-thaw cycles.
<b>RefSeq:</b>	<a href="#">NP_000470</a>
<b>Locus ID:</b>	268
<b>UniProt ID:</b>	<a href="#">P03971</a>
<b>RefSeq Size:</b>	2008
<b>Cytogenetics:</b>	19p13.3
<b>RefSeq ORF:</b>	1680
<b>Synonyms:</b>	MIF; MIS
<b>Summary:</b>	This gene encodes a secreted ligand of the TGF-beta (transforming growth factor-beta) superfamily of proteins. Ligands of this family bind various TGF-beta receptors leading to recruitment and activation of SMAD family transcription factors that regulate gene expression. The encoded preproprotein is proteolytically processed to generate N- and C-terminal cleavage products that homodimerize and associate to form a biologically active noncovalent complex. This complex binds to the anti-Mullerian hormone receptor type 2 and causes the regression of Mullerian ducts in the male embryo that would otherwise differentiate into the uterus and fallopian tubes. This protein also plays a role in Leydig cell differentiation and function and follicular development in adult females. Mutations in this gene result in persistent Mullerian duct syndrome. [provided by RefSeq, Jul 2016]
<b>Protein Families:</b>	Druggable Genome, Secreted Protein
<b>Protein Pathways:</b>	Cytokine-cytokine receptor interaction, TGF-beta signaling pathway

### Product images:



Coomassie blue staining of purified AMH protein (Cat# TP308397). The protein was produced from HEK293T cells transfected with AMH cDNA clone (Cat# [RC208397]) using MegaTran 2.0 (Cat# [TT210002]).