

Product datasheet for **TP308396L**

SHOC2 (NM_007373) Human Recombinant Protein

Product data:

Product Type:	Recombinant Proteins
Description:	Recombinant protein of human soc-2 suppressor of clear homolog (C. elegans) (SHOC2), 1 mg
Species:	Human
Expression Host:	HEK293T
Expression cDNA Clone or AA Sequence:	>RC208396 protein sequence Red =Cloning site Green =Tags(s)

MSSSLGKEKDSKEKDPKVPSAKEREREKAKASGGFGKESKEKEPKTKGKDAKDGGKDDSSAAQPGVAFSVDN
TIKRPNPAPGTRKKSSNAEVIKELNKCREENSMRLDLSKRSIHILPSSIKELTQLTELYLSNKLQSLPA
EVGCLVNLMTLALSENSLTSLPDSLNLKKLRMLDLRHNKLREIPSVYRLDSLTTLYLRFNRITVEKD
IKNLSKLSMLSIRENIKQLPAEIGELCNLITLDVAHNQLEHLPKEIGNCTQITNLDLQHNELLDLPDTI
GNLSSLSRLGLRYNRLSAIPRSLAKCSALEELNLENNNISTLPESLLSSLVKLNSLTARNCFQLYPVGG
PSQFSTIYSLNMEHNRINKIPFGIFSRAKVLKLNMKDNQLTSLPLDFGTWTSMVELNLATNQLTKIPED
VSGLVSEVLILSNLLKKLPHGLGNLRKLELDLEENKLESLPNEIAYLKDQLKVLVTNNQLTTLPRGI
GHILTNLTHLGLGENLLTHLPEEIGTLENLEELYLNDNPNLHSLPFELALCSKLSIMSIENCPLSHLPPQI
VAGGPSFIIQFLKMQGPYAMV

TRTRPLEQKLISEEDLAANDILDYKDDDDKV

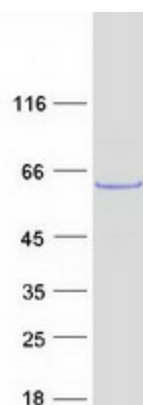
Tag:	C-Myc/DDK
Predicted MW:	64.7 kDa
Concentration:	>0.05 µg/µL as determined by microplate BCA method
Purity:	> 80% as determined by SDS-PAGE and Coomassie blue staining
Buffer:	25 mM Tris-HCl, 100 mM glycine, pH 7.3, 10% glycerol
Preparation:	Recombinant protein was captured through anti-DDK affinity column followed by conventional chromatography steps.
Note:	For testing in cell culture applications, please filter before use. Note that you may experience some loss of protein during the filtration process.
Storage:	Store at -80°C.



[View online »](#)

Stability:	Stable for 12 months from the date of receipt of the product under proper storage and handling conditions. Avoid repeated freeze-thaw cycles.
RefSeq:	<u>NP_031399</u>
Locus ID:	8036
UniProt ID:	<u>Q9UQ13</u>
RefSeq Size:	3962
Cytogenetics:	10q25.2
RefSeq ORF:	1746
Synonyms:	NSLH1; SIAA0862; SOC2; SUR8
Summary:	This gene encodes a protein that consists almost entirely of leucine-rich repeats, a domain implicated in protein-protein interactions. The protein may function as a scaffold linking RAS to downstream signal transducers in the RAS/ERK MAP kinase signaling cascade. Mutations in this gene have been associated with Noonan-like syndrome with loose anagen hair. [provided by RefSeq, May 2010]
Protein Families:	Druggable Genome

Product images:



Coomassie blue staining of purified SHOC2 protein (Cat# [TP308396]). The protein was produced from HEK293T cells transfected with SHOC2 cDNA clone (Cat# [RC208396]) using MegaTran 2.0 (Cat# [TT210002]).