

Product datasheet for **TP308388**

QPCT (NM_012413) Human Recombinant Protein

Product data:

Product Type:	Recombinant Proteins
Description:	Recombinant protein of human glutaminyl-peptide cyclotransferase (QPCT), 20 µg
Species:	Human
Expression Host:	HEK293T
Expression cDNA Clone or AA Sequence:	>RC208388 protein sequence Red =Cloning site Green =Tags(s)
	MAGGRHRRVGTLLHLLLVAALPWASRGVSPSASAWPEEKNYHQPAILNSSALRQIAEGTSISEMWQND L QPLLIERYPGSPGSYAARQHIMQRIQLQADWVLEIDTFLSQTTPYGYRSFSNIISTLNPTAKRHLVLACH YDSKYFSHWNNRVFVGATDSAVPCAMMLELARALDKLLSLKTVSDSKPDLSQLIFFDGEEAFLHWSPQ DSLYGSRHLAAKMASTPHPPGARGTSQLHGMDLLVLLDLIGAPNPTFPNFFPNSARWFERLQAIHELHE LGLLDHSLEGRYFQNYSYGGVIQDDHIPFLRRGVPVLHLIPSPFPEVWHTMDDNEENLDESTIDNLNKI LQVFLVLEYLHL
	TRTRPLEQKLISEEDLAANDILDYKDDDDKV
Tag:	C-Myc/DDK
Predicted MW:	37.8 kDa
Concentration:	>0.05 µg/µL as determined by microplate BCA method
Purity:	> 80% as determined by SDS-PAGE and Coomassie blue staining
Buffer:	25 mM Tris-HCl, 100 mM glycine, pH 7.3, 10% glycerol
Preparation:	Recombinant protein was captured through anti-DDK affinity column followed by conventional chromatography steps.
Note:	For testing in cell culture applications, please filter before use. Note that you may experience some loss of protein during the filtration process.
Storage:	Store at -80°C.
Stability:	Stable for 12 months from the date of receipt of the product under proper storage and handling conditions. Avoid repeated freeze-thaw cycles.
RefSeq:	<u>NP_036545</u>



[View online »](#)

Locus ID: 25797

UniProt ID: [Q16769](#)

RefSeq Size: 1719

Cytogenetics: 2p22.2

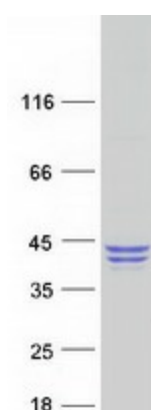
RefSeq ORF: 1083

Synonyms: GCT; QC; sQC

Summary: This gene encodes human pituitary glutaminyl cyclase, which is responsible for the presence of pyroglutamyl residues in many neuroendocrine peptides. The amino acid sequence of this enzyme is 86% identical to that of bovine glutaminyl cyclase. [provided by RefSeq, Jul 2008]

Protein Families: Protease

Product images:



Coomassie blue staining of purified QPCT protein (Cat# TP308388). The protein was produced from HEK293T cells transfected with QPCT cDNA clone (Cat# [RC208388]) using MegaTran 2.0 (Cat# [TT210002]).