

## Product datasheet for **TP308383L**

### ZBED5 (NM\_021211) Human Recombinant Protein

#### Product data:

Product Type:	Recombinant Proteins
Description:	Recombinant protein of human zinc finger, BED-type containing 5 (ZBED5), transcript variant 1, 1 mg
Species:	Human
Expression Host:	HEK293T
Expression cDNA Clone or AA Sequence:	>RC208383 protein sequence Red=Cloning site Green=Tags(s)

MIAPLLCILSYNFNTFAILNVYSKLTMFCTTNSLPMDLLLKQGSLKQEVESFCYQIVSESNDQKVGILQS  
EDKQLQPSVSKKSEGELSRVKFISNSNKITFSKKPKRRKYDESYLSFGFTYFGNRDAPHAQCVLCKKILS  
NSSLAPSKLRRHLETKHAAYKDKDISFFKQHLDSPENKPPPTPKIVNTDNESATEASVNSYHIALSGEA  
HTIGELLIKPCAKDVVMRMFDEQYSKKIDAVQLSNSTVARRIKDLAADIEEELVCRKIKICDGFSLQLDES  
ADVSGLAVLLVFRYRFNKSIEEDLLLCESLQSNATGEEIFNCINSFMQKHEIEWEKVDVCS DASRAVD  
GKIAEAVTLIKYVAPESTSSHCLLYRHALAVKIMPTSLKNVLDQAVQIINYIKARPHQSRLKILCEEMG  
AQHTALLNTEVRWLSRGKVLVRLFELRRELLVFMDSAFRLSDCLTNSSWLLRLAYLADIFTKLNEVNL  
MQGKM

TRTRPLEQKLISEEDLAANDILDYKDDDDKV

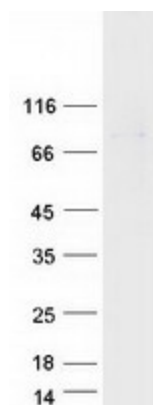
Tag:	C-Myc/DDK
Predicted MW:	78.7 kDa
Concentration:	>0.05 µg/µL as determined by microplate BCA method
Purity:	> 80% as determined by SDS-PAGE and Coomassie blue staining
Buffer:	25 mM Tris-HCl, 100 mM glycine, pH 7.3, 10% glycerol
Preparation:	Recombinant protein was captured through anti-DDK affinity column followed by conventional chromatography steps.
Note:	For testing in cell culture applications, please filter before use. Note that you may experience some loss of protein during the filtration process.
Storage:	Store at -80°C.



[View online »](#)

Stability:	Stable for 12 months from the date of receipt of the product under proper storage and handling conditions. Avoid repeated freeze-thaw cycles.
RefSeq:	<a href="#">NP_067034</a>
Locus ID:	58486
UniProt ID:	<a href="#">Q49AG3</a>
RefSeq Size:	2756
Cytogenetics:	11p15.4
RefSeq ORF:	546
Synonyms:	Buster1
Summary:	This gene is unusual in that its coding sequence is mostly derived from Charlie-like DNA transposon; however, it does not appear to be an active DNA transposon as it is not flanked by terminal inverted repeats. The encoded protein is conserved among the mammalian Laurasiatheria branch. Multiple alternatively spliced variants, encoding the same protein, have been identified. [provided by RefSeq, Jan 2009]

### Product images:



Coomassie blue staining of purified ZBED5 protein (Cat# [TP308383]). The protein was produced from HEK293T cells transfected with ZBED5 cDNA clone (Cat# [RC208383]) using MegaTran 2.0 (Cat# [TT210002]).