

## Product datasheet for **TP308381M**

### LXR beta (NR1H2) (NM\_007121) Human Recombinant Protein

#### Product data:

Product Type:	Recombinant Proteins
Description:	Recombinant protein of human nuclear receptor subfamily 1, group H, member 2 (NR1H2), 100 µg
Species:	Human
Expression Host:	HEK293T
Expression cDNA	>RC208381 protein sequence
Clone or AA Sequence:	Red=Cloning site Green=Tags(s)

MSSPTTSSLDTPLPGNGPPQPGAPSSSPTVKEEGPEPWPGGPDVPGTDEASSACSTDWVIPDEEEPE  
RKRKKGPAKMLGHELRCVCGDKASGFHYNVLSCEGCKGFFRRSVVRGGARRYACRGGGTCQMDAFMRRK  
CQQCRLRKCKEAGMREQCVLSEEQIRKKKIRKQQQESQSQSQSPVGPQGSSSSASGPGASPGGSEAGSQ  
GSGEGEGVQLTAAQELMIQQLVAAQLQCNKRSFSDQPKVTPWPLGADPQSRDARQQRFAHFTELAIISVQ  
EIVDFAKQVPGLQLGREDQIALLKASTIEIMLLETARRYNHETECITFLKDFTYSKDDFHRAQLQVEFI  
NPIFEFSRAMRRLGLDDAEYALLIAINIFSADRPNVQEPGRVEALQQPYVEALLSYTRIKRPQDQLRFP  
MLMKLVSLRTLSSVHSEQVFALRLQDKKLPPLLSEIWDVHE

TRTRPLEQKLISEEDLAANDILDYKDDDDKV

Tag:	C-Myc/DDK
Predicted MW:	50.9 kDa
Concentration:	>0.05 µg/µL as determined by microplate BCA method
Purity:	> 80% as determined by SDS-PAGE and Coomassie blue staining
Buffer:	25 mM Tris-HCl, 100 mM glycine, pH 7.3, 10% glycerol
Bioactivity:	Surface Plasmon Resonance (SPR) (PMID: <a href="#">27489280</a> )
Preparation:	Recombinant protein was captured through anti-DDK affinity column followed by conventional chromatography steps.
Note:	For testing in cell culture applications, please filter before use. Note that you may experience some loss of protein during the filtration process.
Storage:	Store at -80°C.



[View online »](#)

**Stability:** Stable for 12 months from the date of receipt of the product under proper storage and handling conditions. Avoid repeated freeze-thaw cycles.

**RefSeq:** [NP\\_009052](#)

**Locus ID:** 7376

**UniProt ID:** [P55055](#), [F1D8P7](#)

**RefSeq Size:** 2093

**Cytogenetics:** 19q13.33

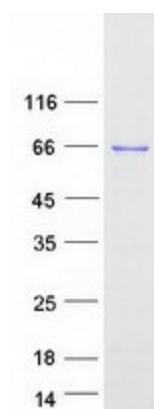
**RefSeq ORF:** 1383

**Synonyms:** LXR-b; LXRb; NER; NER-I; RIP15; UNR

**Summary:** The liver X receptors, LXRA (NR1H3; MIM 602423) and LXRb, form a subfamily of the nuclear receptor superfamily and are key regulators of macrophage function, controlling transcriptional programs involved in lipid homeostasis and inflammation. The inducible LXRA is highly expressed in liver, adrenal gland, intestine, adipose tissue, macrophages, lung, and kidney, whereas LXRb is ubiquitously expressed. Ligand-activated LXRs form obligate heterodimers with retinoid X receptors (RXRs; see MIM 180245) and regulate expression of target genes containing LXR response elements (summary by Korf et al., 2009 [PubMed 19436111]).[supplied by OMIM, Jan 2010]

**Protein Families:** Druggable Genome, Nuclear Hormone Receptor, Transcription Factors

### Product images:



Coomassie blue staining of purified NR1H2 protein (Cat# [TP308381]). The protein was produced from HEK293T cells transfected with NR1H2 cDNA clone (Cat# [RC208381]) using MegaTran 2.0 (Cat# [TT210002]).