

Product datasheet for **TP308380**

SPCS3 (NM_021928) Human Recombinant Protein

Product data:

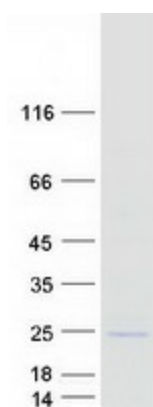
Product Type:	Recombinant Proteins
Description:	Recombinant protein of human signal peptidase complex subunit 3 homolog (<i>S. cerevisiae</i>) (SPCS3), 20 µg
Species:	Human
Expression Host:	HEK293T
Expression cDNA Clone or AA Sequence:	>RC208380 protein sequence Red =Cloning site Green =Tags(s)
	 MNTVLSRANSLFAFSLSVMAALTFGCFITAFKDRSVPVRLHVSRIMLKKNVEDFTGPRERSDLGFITFDI TADLENIFDWNVKQLFLYLSAEYSTKNNALNQQVVLWDKIVLRGDNPKLLKDKMKTGYFFDDGNGLKGNR NVTLTLSWNVVPNAGILPLVTGSGHVSVPFPDYEITKSY TRTRPLEQKLISEEDLAANDILDYKDDDDKV
Tag:	C-Myc/DDK
Predicted MW:	20.1 kDa
Concentration:	>0.05 µg/µL as determined by microplate BCA method
Purity:	> 80% as determined by SDS-PAGE and Coomassie blue staining
Buffer:	25 mM Tris-HCl, 100 mM glycine, pH 7.3, 10% glycerol
Preparation:	Recombinant protein was captured through anti-DDK affinity column followed by conventional chromatography steps.
Note:	For testing in cell culture applications, please filter before use. Note that you may experience some loss of protein during the filtration process.
Storage:	Store at -80°C.
Stability:	Stable for 12 months from the date of receipt of the product under proper storage and handling conditions. Avoid repeated freeze-thaw cycles.
RefSeq:	NP_068747
Locus ID:	60559
UniProt ID:	P61009



[View online »](#)

RefSeq Size:	4596
Cytogenetics:	4q34.2
RefSeq ORF:	540
Synonyms:	PRO3567; SPC3; SPC22; SPC22/23; SPC23; YLR066W
Summary:	Component of the microsomal signal peptidase complex which removes signal peptides and other N-terminal peptides from nascent proteins as they are translocated into the lumen of the endoplasmic reticulum.[UniProtKB/Swiss-Prot Function]
Protein Families:	Protease, Transmembrane

Product images:



Coomassie blue staining of purified SPCS3 protein (Cat# TP308380). The protein was produced from HEK293T cells transfected with SPCS3 cDNA clone (Cat# [RC208380]) using MegaTran 2.0 (Cat# [TT210002]).