

## Product datasheet for **TP308341M**

### Cathepsin Z (CTSZ) (NM\_001336) Human Recombinant Protein

#### Product data:

Product Type:	Recombinant Proteins
Description:	Recombinant protein of human cathepsin Z (CTSZ), 100 µg
Species:	Human
Expression Host:	HEK293T
Expression cDNA Clone or AA Sequence:	>RC208341 protein sequence <b>Red</b> =Cloning site <b>Green</b> =Tags(s)
	MARRGPGWRPLLLLVLLAGAAQGGLYFRRGQTCYRPLRGDGLAPLGRSTYPRPHEYLSPADLPKSWDWRN VDGVNYASITRNQHIPQYCGSCWAHASTSAMADRINIKRKGAWPSTLLSVQNVIDCGNAGSCEGGNDLSV WDYAHQHIGIPDETCNNYQAKDQECDKFNQCGTCNEFKECHAIRNYTLWRVGDYGSLSGREKMMAEIYANG PISCGIMATERLANYTGGIYAEYQDTTYINHWVSVAGWGISDGTEYWIVRNSWGEPWGERGWLRIVTSTY KDGKGARYNLAIEEHCTFGDPIV
	<b>TRTRPLEQKLISEEDLAANDILDYKDDDDKV</b>
Tag:	C-Myc/DDK
Predicted MW:	31.4 kDa
Concentration:	>0.05 µg/µL as determined by microplate BCA method
Purity:	> 80% as determined by SDS-PAGE and Coomassie blue staining
Buffer:	25 mM Tris-HCl, 100 mM glycine, pH 7.3, 10% glycerol
Preparation:	Recombinant protein was captured through anti-DDK affinity column followed by conventional chromatography steps.
Note:	For testing in cell culture applications, please filter before use. Note that you may experience some loss of protein during the filtration process.
Storage:	Store at -80°C.
Stability:	Stable for 12 months from the date of receipt of the product under proper storage and handling conditions. Avoid repeated freeze-thaw cycles.
RefSeq:	<a href="#">NP_001327</a>
Locus ID:	1522



[View online »](#)

UniProt ID: [Q9UBR2](#)

RefSeq Size: 1517

Cytogenetics: 20q13.32

RefSeq ORF: 909

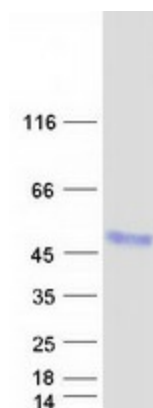
Synonyms: CTSX

**Summary:** The protein encoded by this gene is a lysosomal cysteine proteinase and member of the peptidase C1 family. It exhibits both carboxy-monopeptidase and carboxy-dipeptidase activities. The encoded protein has also been known as cathepsin X and cathepsin P. This gene is expressed ubiquitously in cancer cell lines and primary tumors and, like other members of this family, may be involved in tumorigenesis. [provided by RefSeq, Oct 2008]

**Protein Families:** Druggable Genome, Protease

**Protein Pathways:** Lysosome

### Product images:



Coomassie blue staining of purified CTSZ protein (Cat# [TP308341]). The protein was produced from HEK293T cells transfected with CTSZ cDNA clone (Cat# [RC208341]) using MegaTran 2.0 (Cat# [TT210002]).